

Contact

Post:

REPUBLIC OF SINGAPORE
AERONAUTICAL
INFORMATION SERVICES
CIVIL AVIATION AUTHORITY
OF SINGAPORE
SINGAPORE CHANGI
AIRPORT
P.O. BOX 1, SINGAPORE
918141

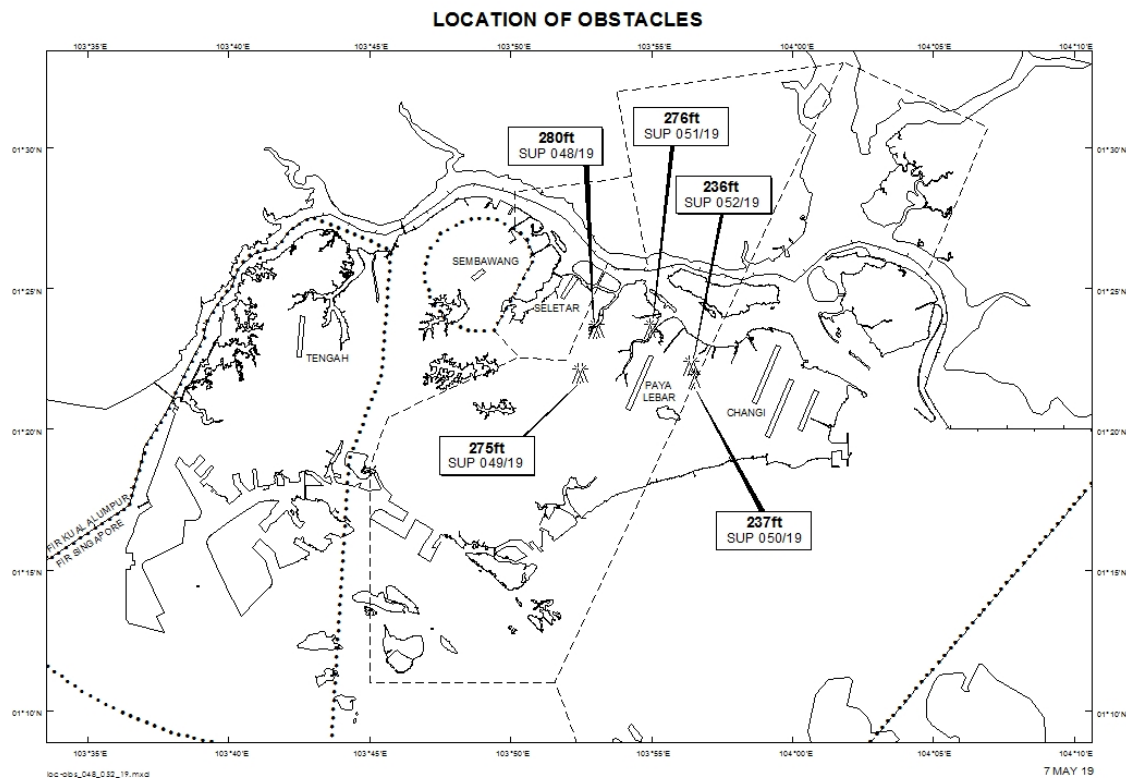
Tel: (65) 6595 6051

AFS: WSSSYNYX

Fax: (65) 64410221

Email: caas_singaporeais@caas.gov.sgURL: www.caas.gov.sgURL: <https://fpl-1.caasaim.gov.sg>**AIP Supplement for
Singapore****AIP SUP
050/2019****Effective from 07 MAY 2019****/ 30 NOV 2020****Published on 07 MAY 2019****PAYA LEBAR AIRPORT – CRAWLER CRANE**

WIE/2011301559 one crawler crane, height 237ft AMSL, erected at 012147N 1035632E (bearing 79.4 degrees, distance 2.41nm from Paya Lebar ARP – within Paya Lebar Control Zone). Crane marked and lighted at night. (NOTAM A1479/19 dated 22/04/19 is hereby superseded.)



PAGE INTENTIONALLY LEFT BLANK