

Contact

Post:

REPUBLIC OF SINGAPORE
AERONAUTICAL
INFORMATION SERVICES
CIVIL AVIATION AUTHORITY
OF SINGAPORE
SINGAPORE CHANGI
AIRPORT
P.O. BOX 1, SINGAPORE
918141

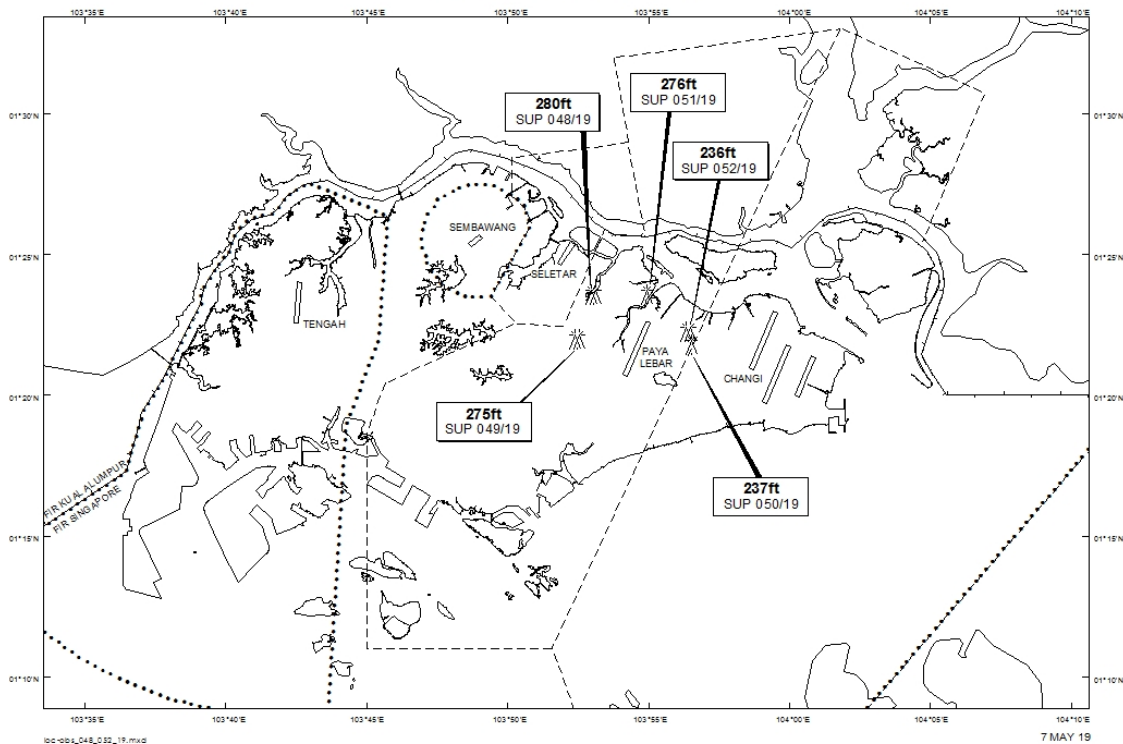
Tel: (65) 6595 6051

AFS: WSSSYNYX

Fax: (65) 64410221

Email: caas_singaporeais@caas.gov.sgURL: www.caas.gov.sgURL: <https://fpl-1.caasaim.gov.sg>**AIP Supplement for
Singapore****AIP SUP
052/2019****Effective from 07 MAY 2019****/ 31 AUG 2020****Published on 07 MAY 2019****PAYA LEBAR AIRPORT – CRANES AND PILING RIG**

WIE/2008311559 two mobile cranes, one crawler crane and one piling rig, height 236ft AMSL, erected at 012214N 1035623E (bearing 68.0 degrees, distance 2.39nm from Paya Lebar ARP – within Paya Lebar Control Zone). Cranes and piling rig marked and lighted at night. (NOTAM A1465/19 dated 18/04/19 is hereby superseded.)

LOCATION OF OBSTACLES

PAGE INTENTIONALLY LEFT BLANK