

Contact

Post:

REPUBLIC OF SINGAPORE
AERONAUTICAL
INFORMATION SERVICES
CIVIL AVIATION AUTHORITY
OF SINGAPORE
SINGAPORE CHANGI
AIRPORT
P.O. BOX 1, SINGAPORE
918141

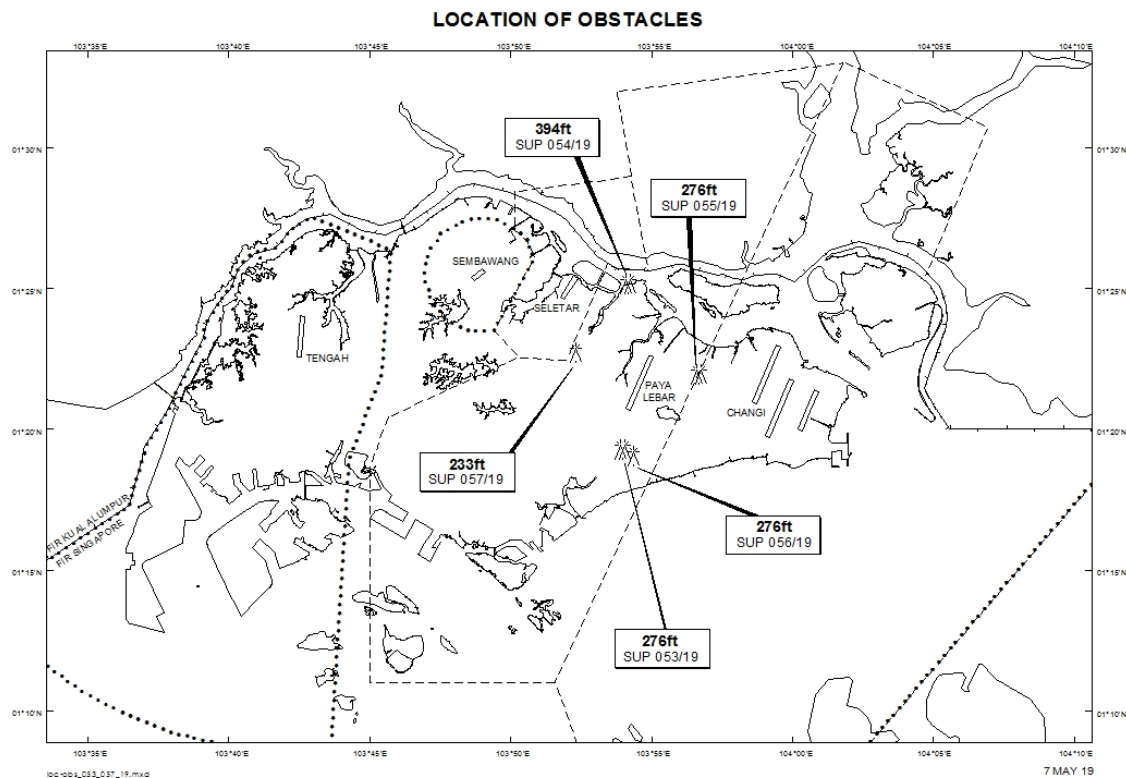
Tel: (65) 6595 6051

AFS: WSSSYNYX

Fax: (65) 64410221

Email: caas_singaporeais@caas.gov.sgURL: www.caas.gov.sgURL: <https://fpl-1.caasaim.gov.sg>**AIP Supplement for
Singapore****AIP SUP
053/2019****Effective from 07 MAY 2019****/ 31 DEC 2023****Published on 07 MAY 2019****PAYA LEBAR AIRPORT – SADDLE CRANES AND LUFFER CRANE**

WIE/2312311559 seven saddle cranes and one luffer crane, height 276ft AMSL, erected at 011917N 1035359E (bearing 184.6 degrees, distance 2.07nm from Paya Lebar ARP – within Paya Lebar Control Zone). Cranes marked and lighted at night. (NOTAM A1464/19 dated 18/04/19 is hereby superseded.)



PAGE INTENTIONALLY LEFT BLANK