

**Contact**

Post:

REPUBLIC OF SINGAPORE  
AERONAUTICAL  
INFORMATION SERVICES  
CIVIL AVIATION AUTHORITY  
OF SINGAPORE  
SINGAPORE CHANGI  
AIRPORT  
P.O. BOX 1, SINGAPORE  
918141

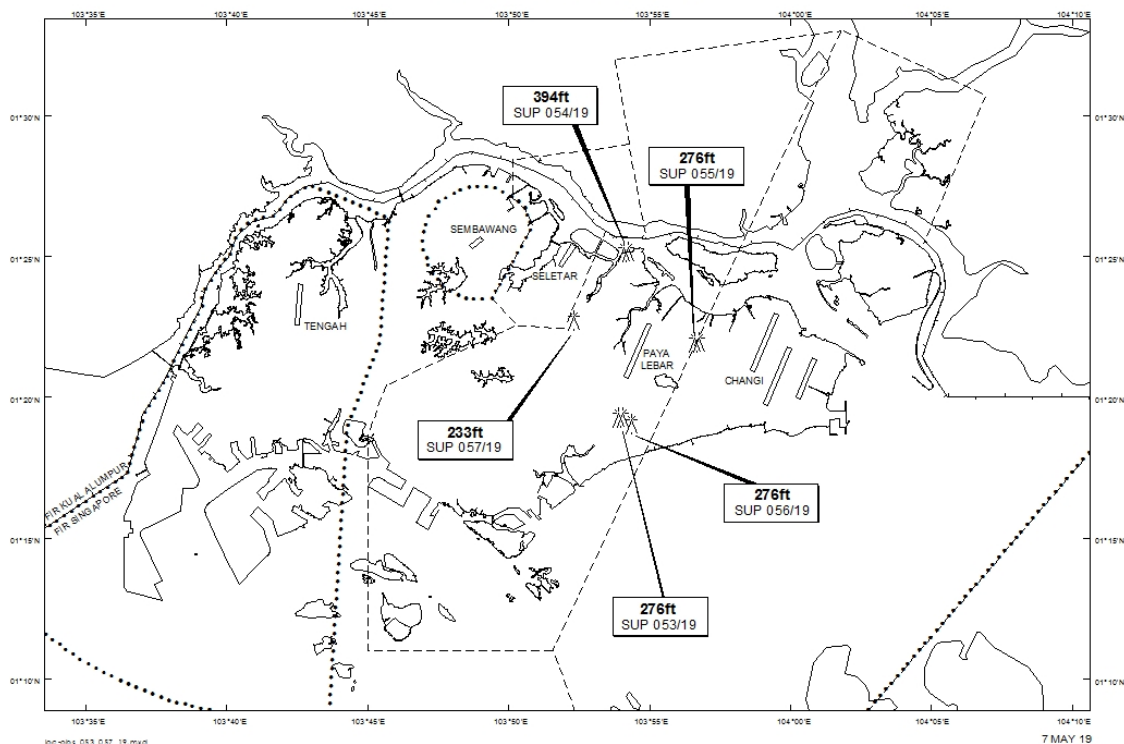
Tel: (65) 6595 6051

AFS: WSSSYNYX

Fax: (65) 64410221

Email: [caas\\_singaporeais@caas.gov.sg](mailto:caas_singaporeais@caas.gov.sg)URL: [www.caas.gov.sg](http://www.caas.gov.sg)URL: <https://fpl-1.caasaim.gov.sg>**AIP Supplement for  
Singapore****AIP SUP  
057/2019****Effective from 07 MAY 2019****/ 08 AUG 2019****Published on 07 MAY 2019****PAYA LEBAR – MOBILE CRANE**

WIE/1908081559 one mobile crane, height 233ft AMSL, erected at 012242N 1035219E (bearing 306.3 degrees, distance 2.30nm from Paya Lebar ARP – within Paya Lebar Control Zone). Crane marked and lighted at night. (NOTAM A1381/19 dated 12/04/19 is hereby superseded.)

**LOCATION OF OBSTACLES**

*PAGE INTENTIONALLY LEFT BLANK*