

**Contact**

Post:

REPUBLIC OF SINGAPORE  
AERONAUTICAL  
INFORMATION SERVICES  
CIVIL AVIATION AUTHORITY  
OF SINGAPORE  
SINGAPORE CHANGI  
AIRPORT  
P.O. BOX 1, SINGAPORE  
918141

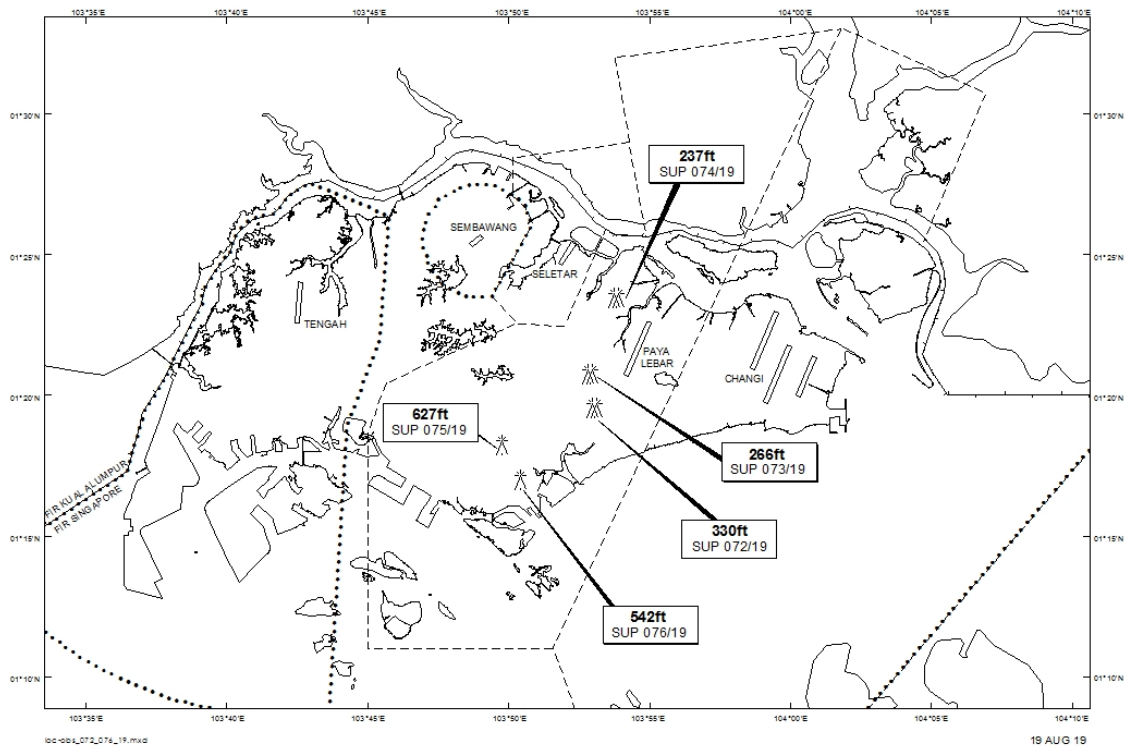
Tel: (65) 6422 7036

AFS: WSSSYNYX

Fax: (65) 64410221

Email: [caas\\_singaporeais@caas.gov.sg](mailto:caas_singaporeais@caas.gov.sg)URL: [www.caas.gov.sg](http://www.caas.gov.sg)URL: <https://fpl-1.caasaim.gov.sg>**AIP Supplement for  
Singapore****AIP SUP  
075/2019****Effective from 19 AUG 2019****/ 31 DEC 2021****Published on 19 AUG 2019****PAYA LEBAR AIRPORT – LUFFING CRANE**

WIE/2112311559 one luffing crane, height 627ft AMSL, erected at 011814N 1034946E (bearing 234.8 degrees, distance 5.39nm from Paya Lebar ARP- within Paya Lebar Control Zone). Crane marked and lighted at night. (NOTAM A2675/19 dated 24/07/19 is hereby superseded.)

**LOCATION OF OBSTACLES**

*PAGE INTENTIONALLY LEFT BLANK*