

Contact

Post:

REPUBLIC OF SINGAPORE
AERONAUTICAL
INFORMATION SERVICES
CIVIL AVIATION AUTHORITY
OF SINGAPORE
SINGAPORE CHANGI
AIRPORT
P.O. BOX 1, SINGAPORE
918141

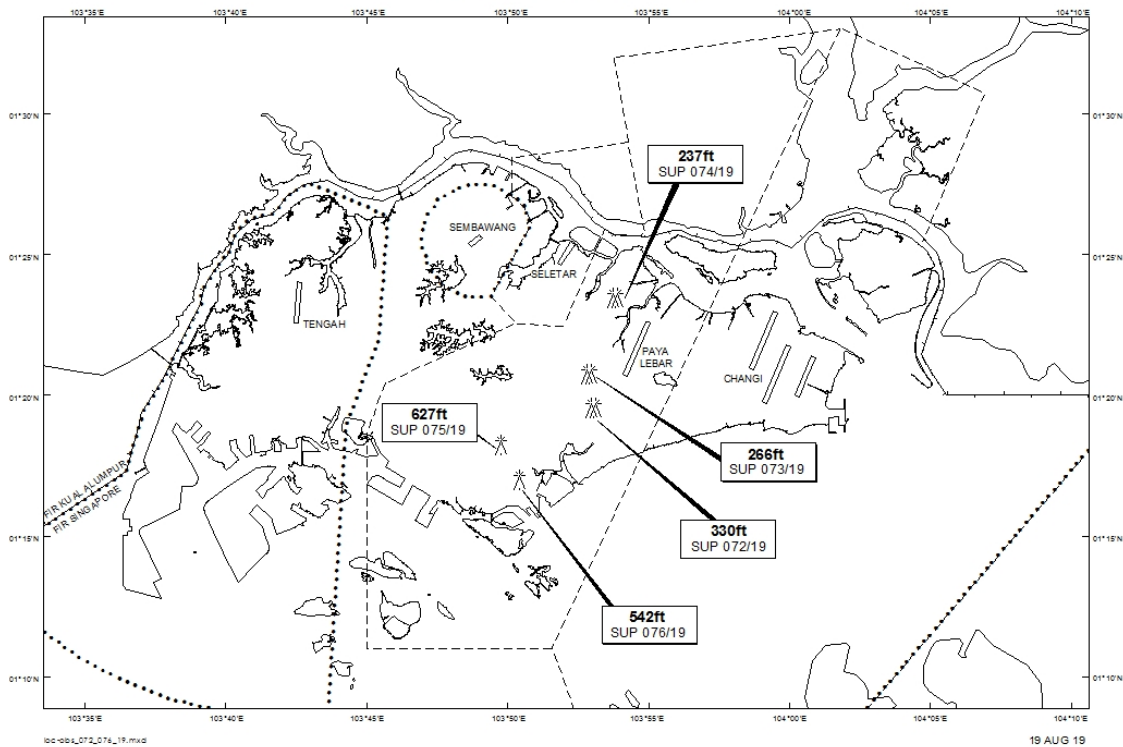
Tel: (65) 6422 7036

AFS: WSSSYNYX

Fax: (65) 64410221

Email: caas_singaporeais@caas.gov.sgURL: www.caas.gov.sgURL: <https://fpl-1.caasaim.gov.sg>**AIP Supplement for
Singapore****AIP SUP
076/2019****Effective from 19 AUG 2019****/ 17 JUL 2020****Published on 19 AUG 2019****PAYA LEBAR AIRPORT – LUFFER CRANE**

WIE/2007171559 one luffer crane, height 542ft AMSL, erected at 011659N 1035024E (bearing 220.9 degrees, distance 5.77nm from Paya Lebar ARP- within Paya Lebar Control Zone). Crane marked and lighted at night. (NOTAM A2589/19 dated 18/07/19 is hereby superseded.)

LOCATION OF OBSTACLES

PAGE INTENTIONALLY LEFT BLANK