

Contact

Post:

REPUBLIC OF SINGAPORE
AERONAUTICAL
INFORMATION SERVICES
CIVIL AVIATION AUTHORITY
OF SINGAPORE
SINGAPORE CHANGI
AIRPORT
P.O. BOX 1, SINGAPORE
918141

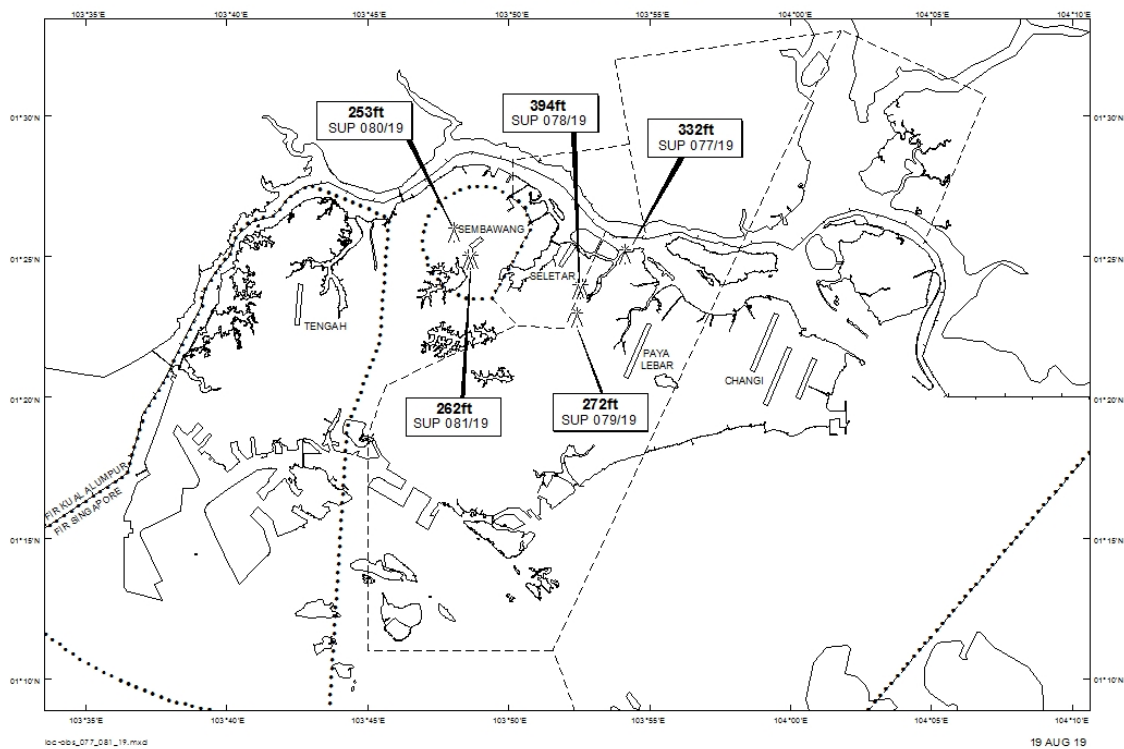
Tel: (65) 6422 7036

AFS: WSSSYNYX

Fax: (65) 64410221

Email: caas_singaporeais@caas.gov.sgURL: www.caas.gov.sgURL: <https://fpl-1.caasaim.gov.sg>**AIP Supplement for
Singapore****AIP SUP
077/2019****Effective from 19 AUG 2019****/ 28 MAY 2020****Published on 19 AUG 2019****PAYA LEBAR AIRPORT – MOBILE CRANE**

WIE/2005281559 one mobile crane, height 332ft AMSL, erected at 012503N 1035407E (bearing 359.1 degrees, distance 3.71nm from Paya Lebar ARP – within Paya Lebar Control Zone). Crane marked and lighted at night. (NOTAM A2588/19 dated 18/07/19 is hereby superseded.)

LOCATION OF OBSTACLES

PAGE INTENTIONALLY LEFT BLANK