

Contact

Post:

REPUBLIC OF SINGAPORE
AERONAUTICAL
INFORMATION SERVICES
CIVIL AVIATION AUTHORITY
OF SINGAPORE
SINGAPORE CHANGI
AIRPORT
P.O. BOX 1, SINGAPORE
918141

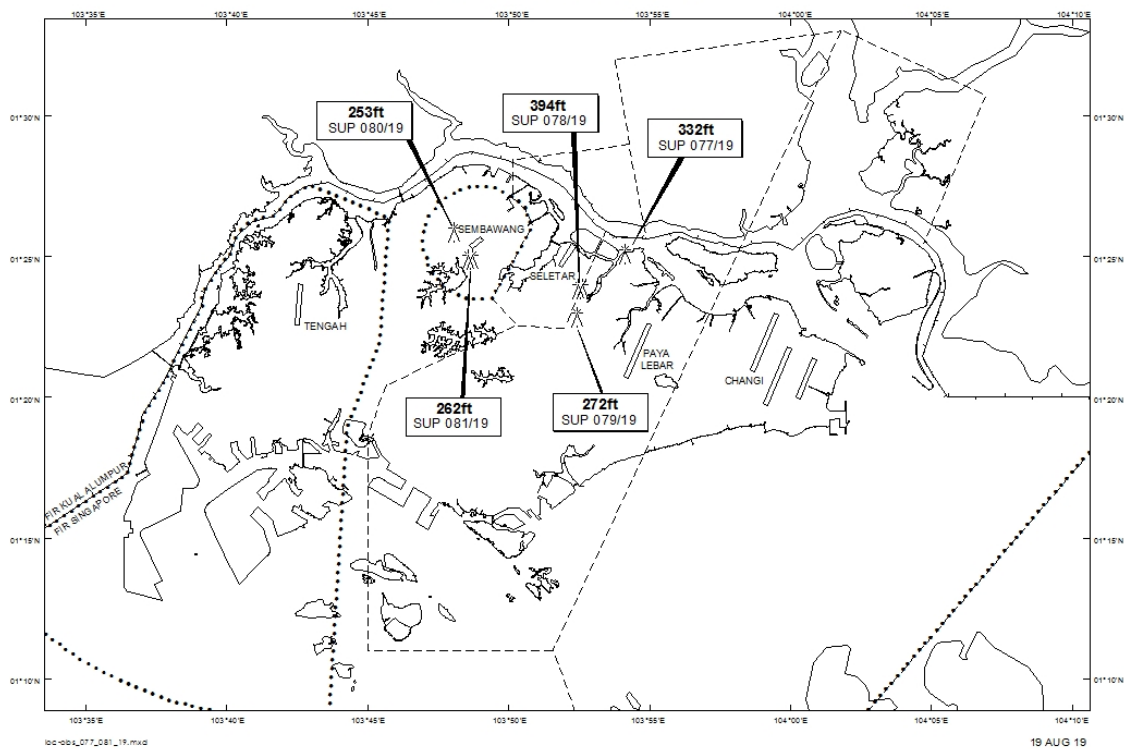
Tel: (65) 6422 7036

AFS: WSSSYNYX

Fax: (65) 64410221

Email: caas_singaporeais@caas.gov.sgURL: www.caas.gov.sgURL: <https://fpl-1.caasaim.gov.sg>**AIP Supplement for
Singapore****AIP SUP
080/2019****Effective from 19 AUG 2019****/ 13 JUL 2020****Published on 19 AUG 2019****SEMBAWANG AERODROME – MOBILE CRANE**

WIE/2007131559 one mobile crane, height 253ft AMSL, erected at 012550N 1034804E (bearing 21.7 degrees, distance 1.65nm from Sembawang ARP- within Sembawang Aerodrome Traffic Zone). Crane marked and lighted at night. (NOTAM A2492/19 dated 05/7/19 is hereby superseded)

LOCATION OF OBSTACLES

PAGE INTENTIONALLY LEFT BLANK