

Contact

Post:

REPUBLIC OF SINGAPORE
AERONAUTICAL
INFORMATION SERVICES
CIVIL AVIATION AUTHORITY
OF SINGAPORE
SINGAPORE CHANGI
AIRPORT
P.O. BOX 1, SINGAPORE
918141

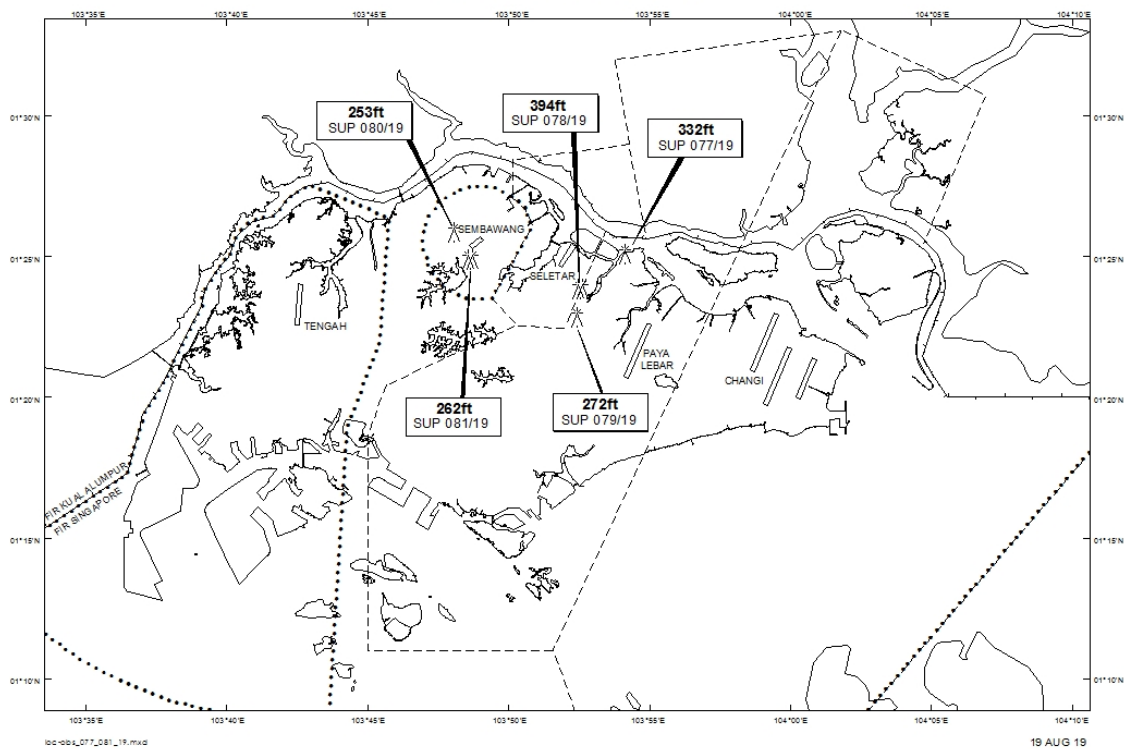
Tel: (65) 6422 7036

AFS: WSSSYNYX

Fax: (65) 64410221

Email: caas_singaporeais@caas.gov.sgURL: www.caas.gov.sgURL: <https://fpl-1.caasaim.gov.sg>**AIP Supplement for
Singapore****AIP SUP
081/2019****Effective from 19 AUG 2019****/ 31 DEC 2019****Published on 19 AUG 2019****SEMBAWANG AERODROME – OBSTACLES**

WIE/1912311559 eight crawler cranes, one mobile crane, eight boring rigs and one diaphragm wall grab, height 262ft AMSL, erected at 012453N 1034837E (bearing 103.5 degrees, distance 1.21nm from Sembawang ARP – within Sembawang Aerodrome Traffic Zone). Obstacles marked and lighted at night. (NOTAM A2402/19 dated 02/07/2019 is hereby superseded)

LOCATION OF OBSTACLES

PAGE INTENTIONALLY LEFT BLANK