

Contact

Post:

REPUBLIC OF SINGAPORE
AERONAUTICAL
INFORMATION SERVICES
CIVIL AVIATION AUTHORITY
OF SINGAPORE
SINGAPORE CHANGI
AIRPORT
P.O. BOX 1, SINGAPORE
918141

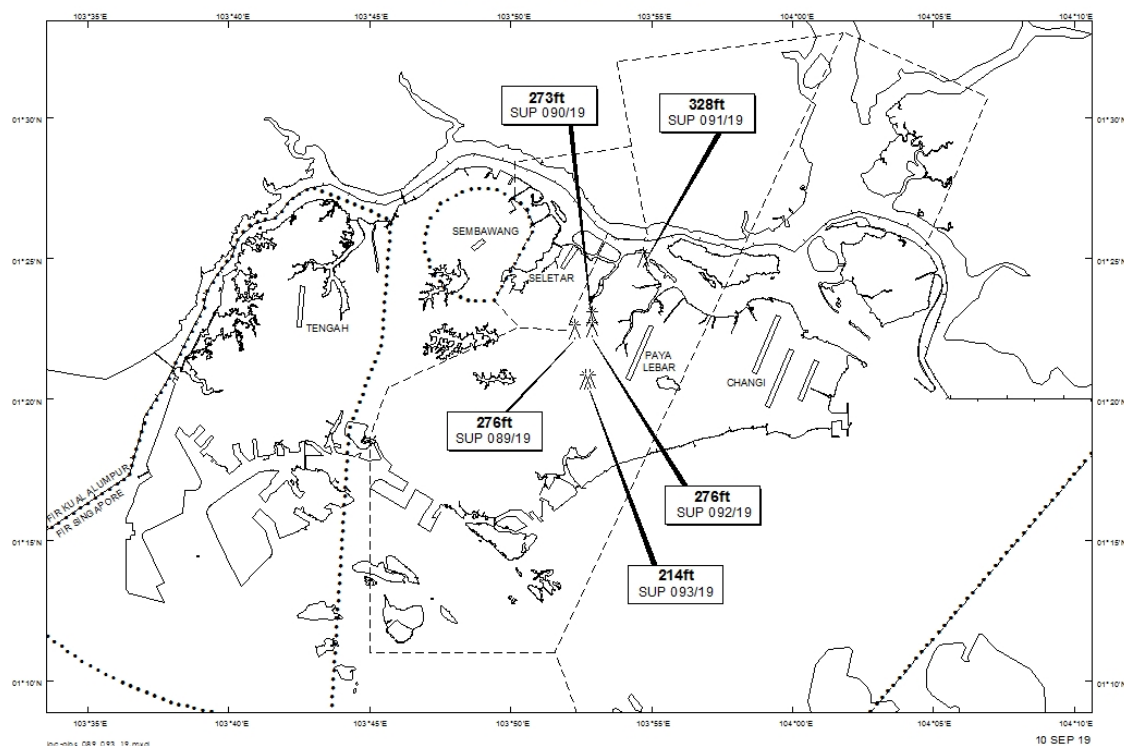
Tel: (65) 6422 7036

AFS: WSSSYNYX

Fax: (65) 64410221

Email: caas_singaporeais@caas.gov.sgURL: www.caas.gov.sgURL: <https://fpl-1.caasaim.gov.sg>**AIP Supplement for
Singapore****AIP SUP
089/2019****Effective from 10 SEP 2019****/ 31 MAR 2020****Published on 10 SEP 2019****PAYA LEBAR AIRPORT – MOBILE CRANE**

WIE/2003311559 one mobile crane, height 276ft AMSL, erected at 012229N 1035217E (bearing 301.3 degrees, distance 2.21nm from Paya Lebar ARP- within Paya Lebar Control Zone). Crane marked and lighted at night. (NOTAM A3156/19 dated 27/08/19 is hereby superseded.)

LOCATION OF OBSTACLES

PAGE INTENTIONALLY LEFT BLANK