

Contact

Post:

REPUBLIC OF SINGAPORE
AERONAUTICAL
INFORMATION SERVICES
CIVIL AVIATION AUTHORITY
OF SINGAPORE
SINGAPORE CHANGI
AIRPORT
P.O. BOX 1, SINGAPORE
918141

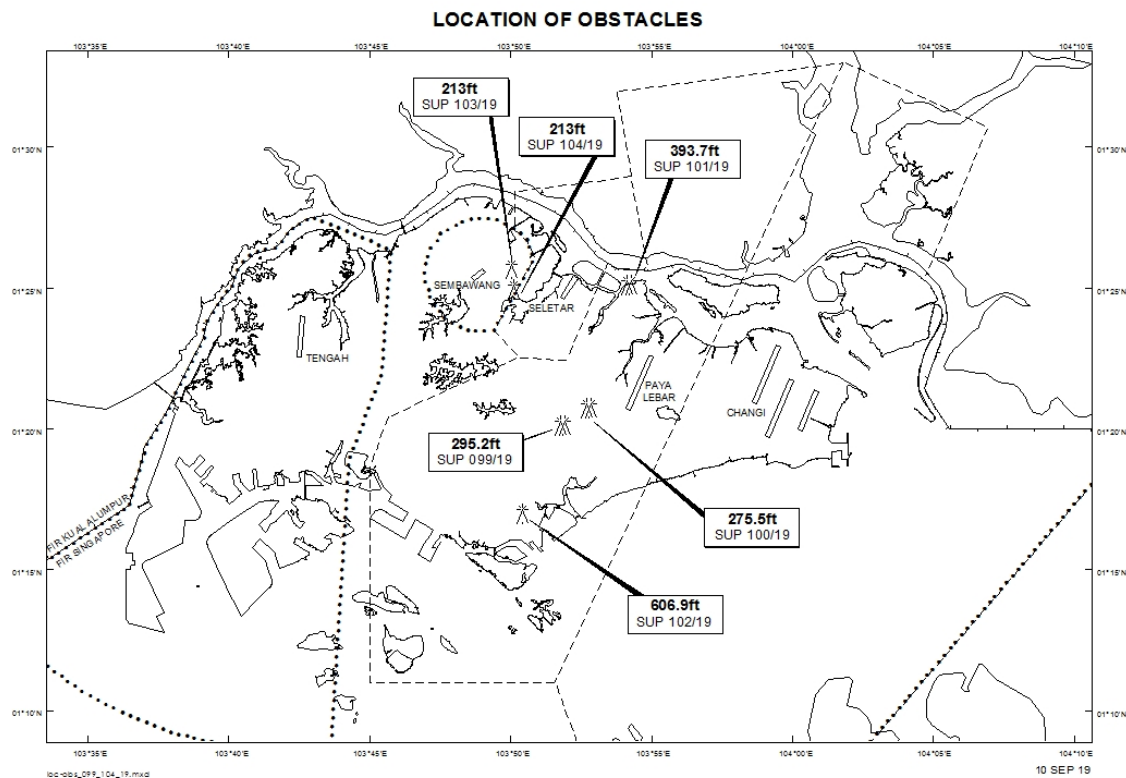
Tel: (65) 6422 7036

AFS: WSSSYNYX

Fax: (65) 64410221

Email: caas_singaporeais@caas.gov.sgURL: www.caas.gov.sgURL: <https://fpl-1.caasaim.gov.sg>**AIP Supplement for
Singapore****AIP SUP
100/2019****Effective from 10 SEP 2019****/ 31 DEC 2020****Published on 10 SEP 2019****PAYA LEBAR AIRPORT – CRANES**

WIE/2012311559 three luffer cranes and two saddle cranes, height 275.5ft AMSL, erected at 012044N 1035245E (bearing 246.9 degrees, distance 1.54nm from Paya Lebar ARP- within Paya Lebar Control Zone). Cranes marked and lighted at night. (NOTAM A2796/19 dated 01/08/19 is hereby superseded.)



PAGE INTENTIONALLY LEFT BLANK