

**Contact**

Post:

REPUBLIC OF SINGAPORE  
AERONAUTICAL  
INFORMATION SERVICES  
CIVIL AVIATION AUTHORITY  
OF SINGAPORE  
SINGAPORE CHANGI  
AIRPORT  
P.O. BOX 1, SINGAPORE  
918141

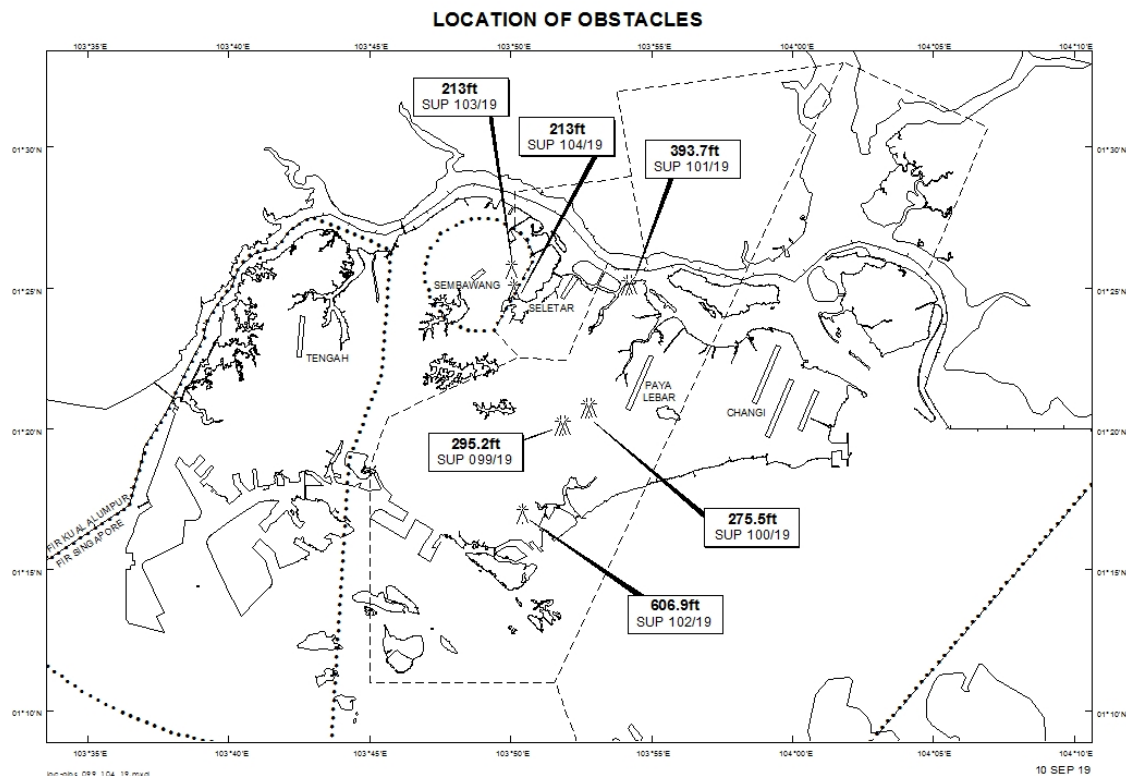
Tel: (65) 6422 7036

AFS: WSSSYNYX

Fax: (65) 64410221

Email: [caas\\_singaporeais@caas.gov.sg](mailto:caas_singaporeais@caas.gov.sg)URL: [www.caas.gov.sg](http://www.caas.gov.sg)URL: <https://fpl-1.caasaim.gov.sg>**AIP Supplement for  
Singapore****AIP SUP  
102/2019****Effective from 10 SEP 2019****/ 17 JUL 2020****Published on 10 SEP 2019****PAYA LEBAR AIRPORT – LUFFER CRANE**

WIE/2007171559 one luffer crane, height 606.9ft AMSL, erected at 011659N 1035024E (bearing 220.9 degrees, distance 5.77nm from Paya Lebar ARP - within Paya Lebar Control Zone). Crane marked and lighted at night. (NOTAM A2794/19 dated 01/08/19 is hereby superseded.)



*PAGE INTENTIONALLY LEFT BLANK*