

Contact

Post:

REPUBLIC OF SINGAPORE
AERONAUTICAL
INFORMATION SERVICES
CIVIL AVIATION AUTHORITY
OF SINGAPORE
SINGAPORE CHANGI
AIRPORT
P.O. BOX 1, SINGAPORE
918141

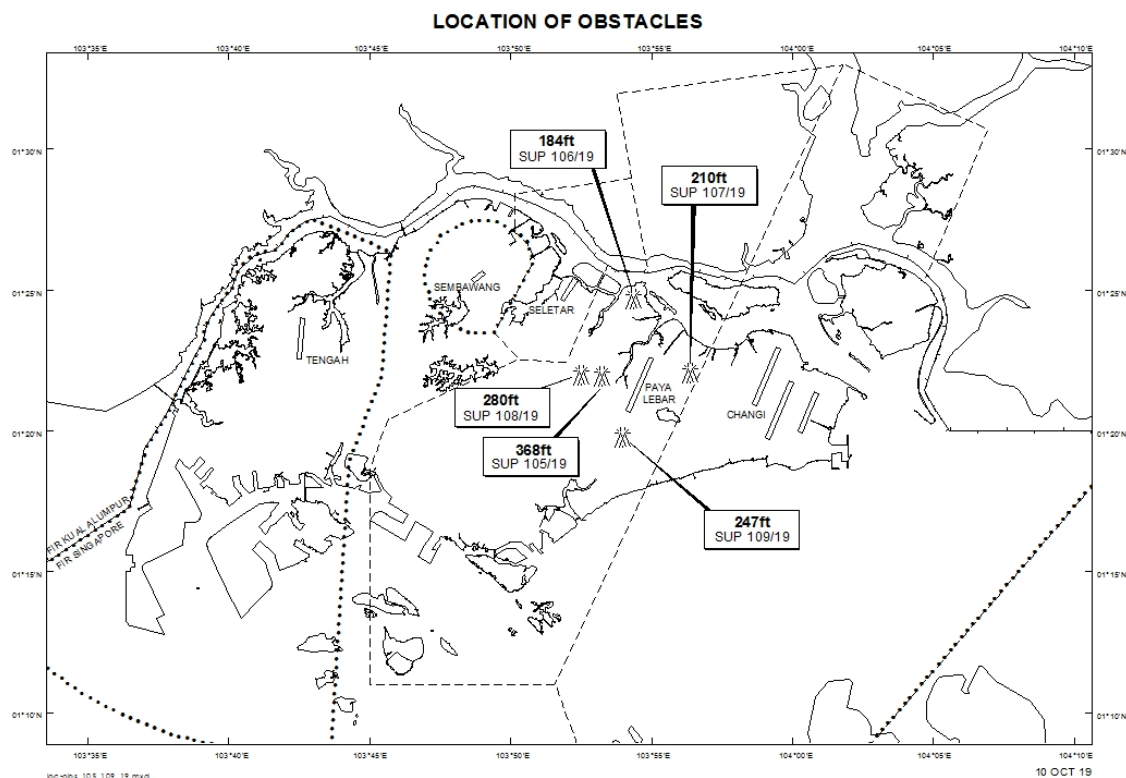
Tel: (65) 6422 7036

AFS: WSSSYNYX

Fax: (65) 64410221

Email: caas_singaporeais@caas.gov.sgURL: www.caas.gov.sgURL: <https://aim-sg.caas.gov.sg>**AIP Supplement for
Singapore****AIP SUP
106/2019****Effective from 10 OCT 2019****/ 30 SEP 2020****Published on 10 OCT 2019****PAYA LEBAR AIRPORT – OBSTACLES**

WIE/2009301559 twelve crawler cranes and twelve boring rigs, height 184ft AMSL, erected at 012441N 1035422E (bearing 3.5 degrees, distance 3.35nm from Paya Lebar ARP – within Paya Lebar Control Zone). Cranes marked and lighted at night. (NOTAM A3781/19 dated 27/09/19 is hereby superseded.)



PAGE INTENTIONALLY LEFT BLANK