

Contact

Post:

REPUBLIC OF SINGAPORE
AERONAUTICAL
INFORMATION SERVICES
CIVIL AVIATION AUTHORITY
OF SINGAPORE
SINGAPORE CHANGI
AIRPORT
P.O. BOX 1, SINGAPORE
918141

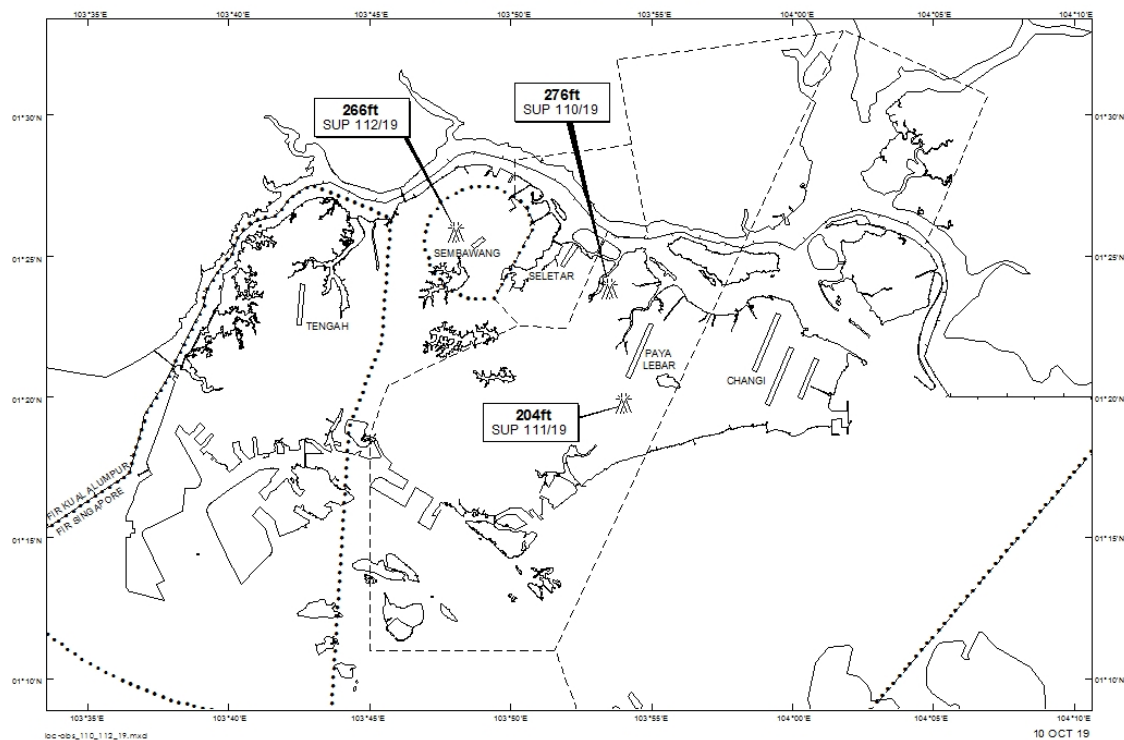
Tel: (65) 6422 7036

AFS: WSSSYNYX

Fax: (65) 64410221

Email: caas_singaporeais@caas.gov.sgURL: www.caas.gov.sgURL: <https://aim-sg.caas.gov.sg>**AIP Supplement for
Singapore****AIP SUP
111/2019****Effective from 10 OCT 2019****/ 20 JUN 2020****Published on 10 OCT 2019****PAYA LEBAR AIRPORT – LUFFER CRANES**

WIE/2006201559 three luffer cranes, height 204ft AMSL, erected at 011945N 1035400E (bearing 185.7 degrees, distance 1.61nm from Paya Lebar ARP – within Paya Lebar Control Zone). Cranes marked and lighted at night. (NOTAM A3351/19 dated 05/09/19 is hereby superseded.)

LOCATION OF OBSTACLES

PAGE INTENTIONALLY LEFT BLANK