

Contact

Post:

REPUBLIC OF SINGAPORE
AERONAUTICAL
INFORMATION SERVICES
CIVIL AVIATION AUTHORITY
OF SINGAPORE
SINGAPORE CHANGI
AIRPORT
P.O. BOX 1, SINGAPORE
918141

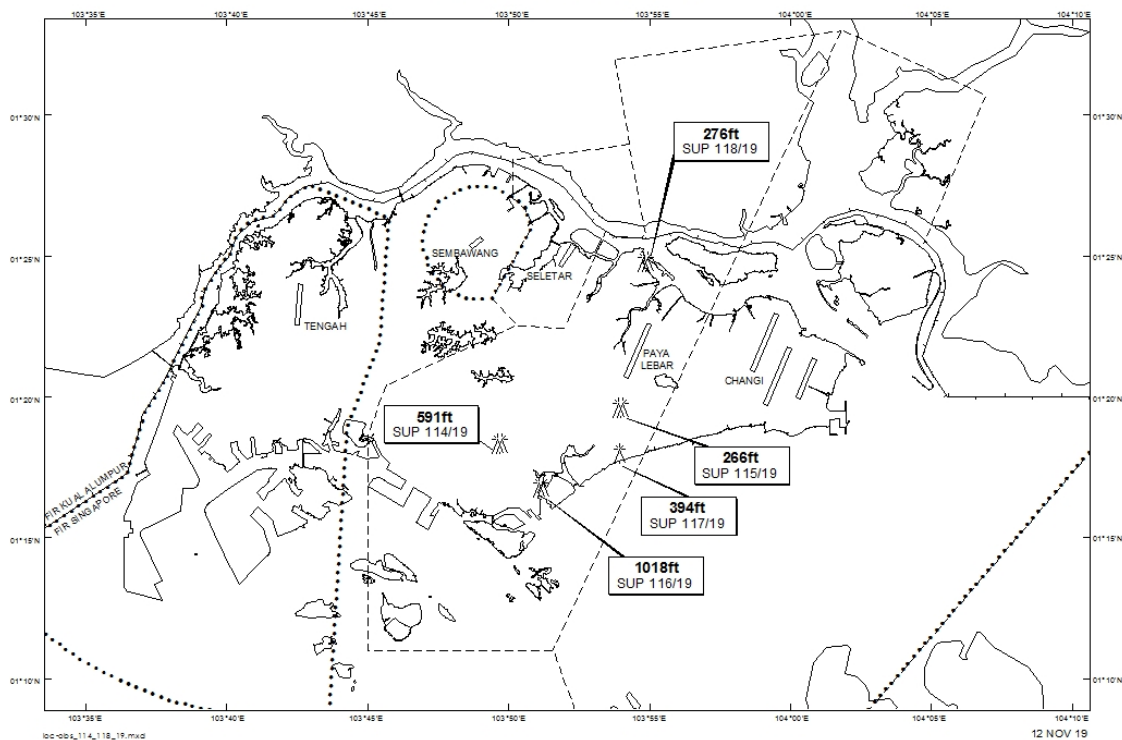
Tel: (65) 6422 7036

AFS: WSSSYNYX

Fax: (65) 64410221

Email: caas_singaporeais@caas.gov.sgURL: www.caas.gov.sgURL: <https://aim-sg.caas.gov.sg>**AIP Supplement for
Singapore****AIP SUP
117/2019****Effective from 12 NOV 2019****/ 31 MAR 2021****Published on 12 NOV 2019****PAYA LEBAR AIRPORT – LUFFING CRANE**

WIE/2103311559 one luffing crane, height 394ft AMSL, erected at 011800N 1035355E (bearing 185 degrees, distance 3.36nm from Paya Lebar ARP - within Paya Lebar Control Zone). Crane marked and lighted at night. (NOTAM A4160 dated 21/10/19 is hereby superseded.)

LOCATION OF OBSTACLES

PAGE INTENTIONALLY LEFT BLANK