

**Contact**

Post:

REPUBLIC OF SINGAPORE  
AERONAUTICAL  
INFORMATION SERVICES  
CIVIL AVIATION AUTHORITY  
OF SINGAPORE  
SINGAPORE CHANGI  
AIRPORT  
P.O. BOX 1, SINGAPORE  
918141

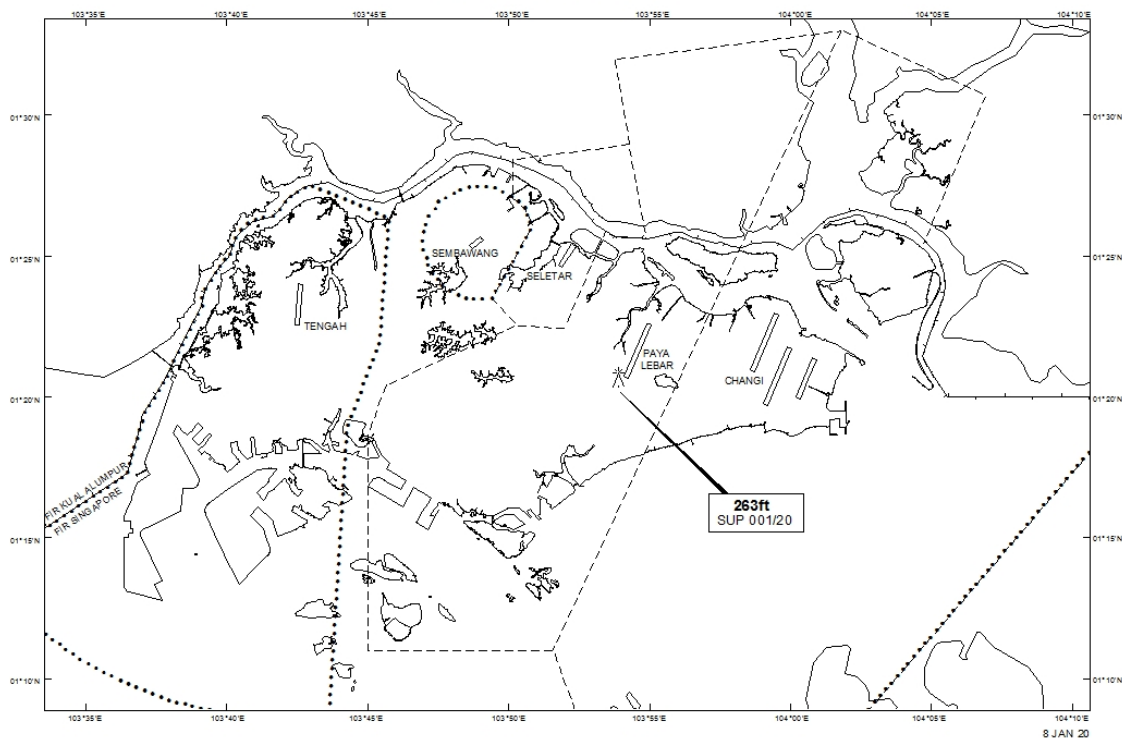
Tel: (65) 6422 7036

AFS: WSSSYNYX

Fax: (65) 64410221

Email: [caas\\_singaporeais@caas.gov.sg](mailto:caas_singaporeais@caas.gov.sg)URL: [www.caas.gov.sg](http://www.caas.gov.sg)URL: <https://aim-sg.caas.gov.sg>**AIP Supplement for  
Singapore****AIP SUP  
001/2020****Effective from 15 JAN 2020****/ 30 JUN 2020****Published on 08 JAN 2020****PAYA LEBAR AIRPORT – CRAWLER CRANE**

Between 2001151600 and 2006301559 one crawler crane, height 263ft AMSL, erected at 012042N 1035353E (bearing 203 degrees, distance 0.70nm from Paya Lebar ARP - within Paya Lebar Control Zone). Crane marked and lighted at night. (NOTAM A5339/19 dated 30/12/19 is hereby superseded.)

**LOCATION OF OBSTACLE**

*PAGE INTENTIONALLY LEFT BLANK*