

Contact

Post:

REPUBLIC OF SINGAPORE
AERONAUTICAL
INFORMATION SERVICES
CIVIL AVIATION AUTHORITY
OF SINGAPORE
SINGAPORE CHANGI
AIRPORT
P.O. BOX 1, SINGAPORE
918141

Tel: (65) 6595 6051

AFS: WSSSYNYX

Fax: (65) 64410221

Email: caas_singaporeais@caas.gov.sgURL: www.caas.gov.sgURL: <https://aim-sg.caas.gov.sg>

AIP Supplement for Singapore



AIP SUP
008/2020

Effective from 11 FEB 2020

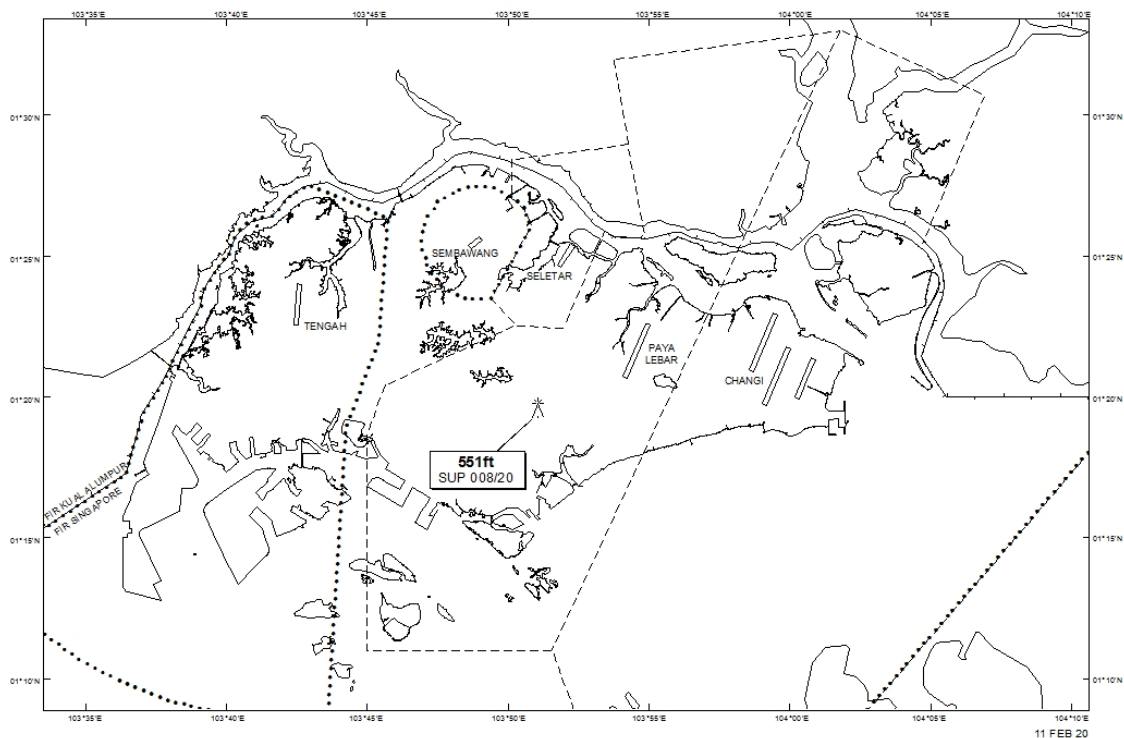
/ 05 APR 2021

Published on 11 FEB 2020

PAYA LEBAR AIRPORT – LUFFING CRANE

WIE/2104051559 one luffing crane, height 551ft AMSL, erected at 011936N 1035103E (bearing 241 degrees, distance 3.58nm from Paya Lebar ARP – within Paya Lebar Control Zone). Crane marked and lighted at night. (NOTAM A0393/20 dated 30/01/2020 is hereby superseded.)

LOCATION OF OBSTACLE



PAGE INTENTIONALLY LEFT BLANK