

**Contact**

Post:

REPUBLIC OF SINGAPORE  
AERONAUTICAL  
INFORMATION SERVICES  
CIVIL AVIATION AUTHORITY  
OF SINGAPORE  
SINGAPORE CHANGI  
AIRPORT  
P.O. BOX 1, SINGAPORE  
918141

Tel: (65) 6422 7036

AFS: WSSSYNYX

Fax: (65) 64410221

Email: [caas\\_singaporeais@caas.gov.sg](mailto:caas_singaporeais@caas.gov.sg)URL: [www.caas.gov.sg](http://www.caas.gov.sg)URL: <https://aim-sg.caas.gov.sg>

## AIP Supplement for Singapore



**AIP SUP**  
**010/2020**

Effective from 11 FEB 2020

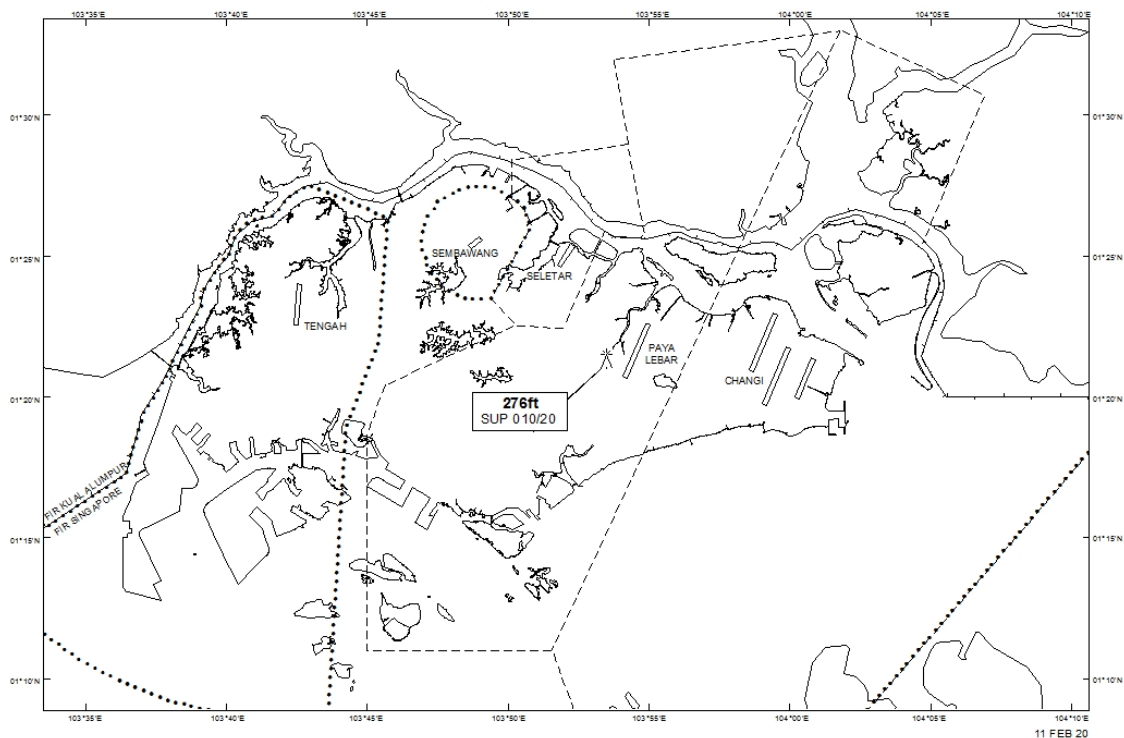
/ 30 SEP 2020

Published on 11 FEB 2020

### PAYA LEBAR AIRPORT – LUFFER CRANE

WIE/2009301559 one luffer crane, height 276ft AMSL, erected at 012122N 1035329E (bearing 271.4 degrees, distance 0.68nm from Paya Lebar ARP - within Paya Lebar Control Zone). Crane marked and lighted at night. (NOTAM A0270/20 dated 23/01/2020 is hereby superseded.)

#### LOCATION OF OBSTACLE



*PAGE INTENTIONALLY LEFT BLANK*