

Contact

Post:

REPUBLIC OF SINGAPORE
AERONAUTICAL
INFORMATION SERVICES
CIVIL AVIATION AUTHORITY
OF SINGAPORE
SINGAPORE CHANGI
AIRPORT
P.O. BOX 1, SINGAPORE
918141

Tel: (65) 6422 7036

AFS: WSSSYNYX

Fax: (65) 64410221

Email: caas_singaporeais@caas.gov.sgURL: www.caas.gov.sgURL: <https://aim-sg.caas.gov.sg>

AIP Supplement for Singapore



AIP SUP
013/2020

Effective from 11 FEB 2020

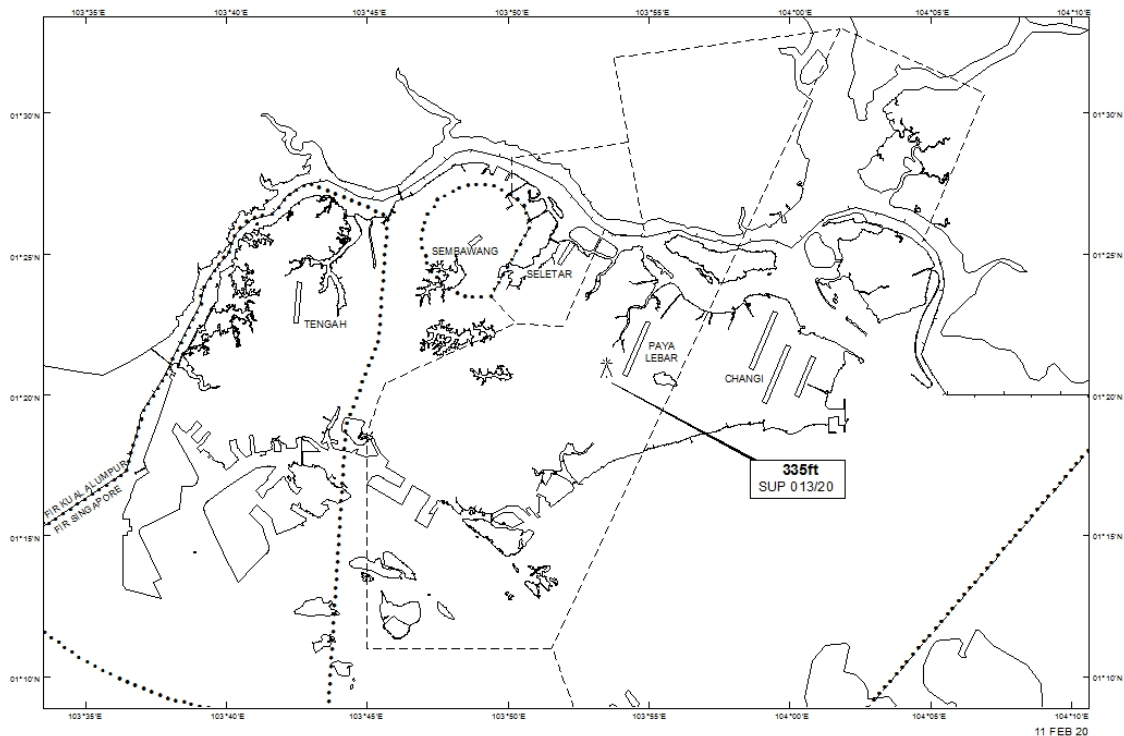
/ 30 JUN 2020

Published on 11 FEB 2020

PAYA LEBAR AIRPORT – MOBILE CRANE

WIE/2006301559 one mobile crane, height 335ft AMSL, erected at 012058N 1035329E (bearing 241 degrees, distance 0.78nm from Paya Lebar ARP - within Paya Lebar Control Zone). Crane marked and lighted at night. (NOTAM A0198/20 dated 17/01/2020 is hereby superseded.)

LOCATION OF OBSTACLE



PAGE INTENTIONALLY LEFT BLANK