

Contact

Post:

REPUBLIC OF SINGAPORE
AERONAUTICAL
INFORMATION SERVICES
CIVIL AVIATION AUTHORITY
OF SINGAPORE
SINGAPORE CHANGI
AIRPORT
P.O. BOX 1, SINGAPORE
918141

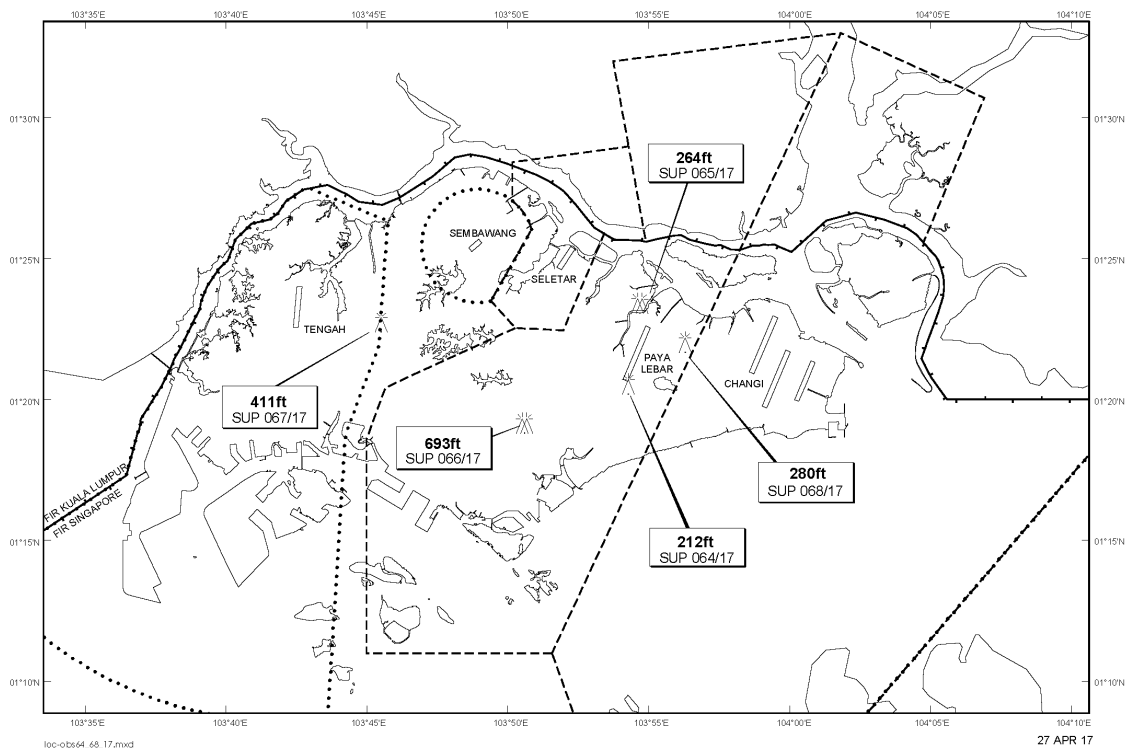
Tel: (65) 6595 6051

AFS: WSSSYNYX

Fax: (65) 64410221

Email: caas_singaporeais@caas.gov.sgURL: www.caas.gov.sgURL: <https://fpl-1.caasaim.gov.sg>**AIP Supplement for
Singapore****AIP SUP
068/2017****Effective from 27 APR 2017****/ 26 OCT 2020****Published on 27 APR 2017****PAYA LEBAR AIRPORT – OBSTACLES**

WIE/2010261559 twenty one topless cranes, fifteen piling rigs, fifteen crawler cranes, five concrete pumps and three mobile cranes, height 280ft AMSL, erected at 012202N 1035617E (bearing 71.9 degrees, distance 2.2nm from Paya Lebar ARP - within Paya Lebar CTR). Obstacles marked and lighted at night. (NOTAM A0611/17 dated 08/03/17 is hereby superseded.)

LOCATION OF OBSTACLES

PAGE INTENTIONALLY LEFT BLANK