

**Contact**

Post:

REPUBLIC OF SINGAPORE  
AERONAUTICAL  
INFORMATION SERVICES  
CIVIL AVIATION AUTHORITY  
OF SINGAPORE  
SINGAPORE CHANGI  
AIRPORT  
P.O. BOX 1, SINGAPORE  
918141

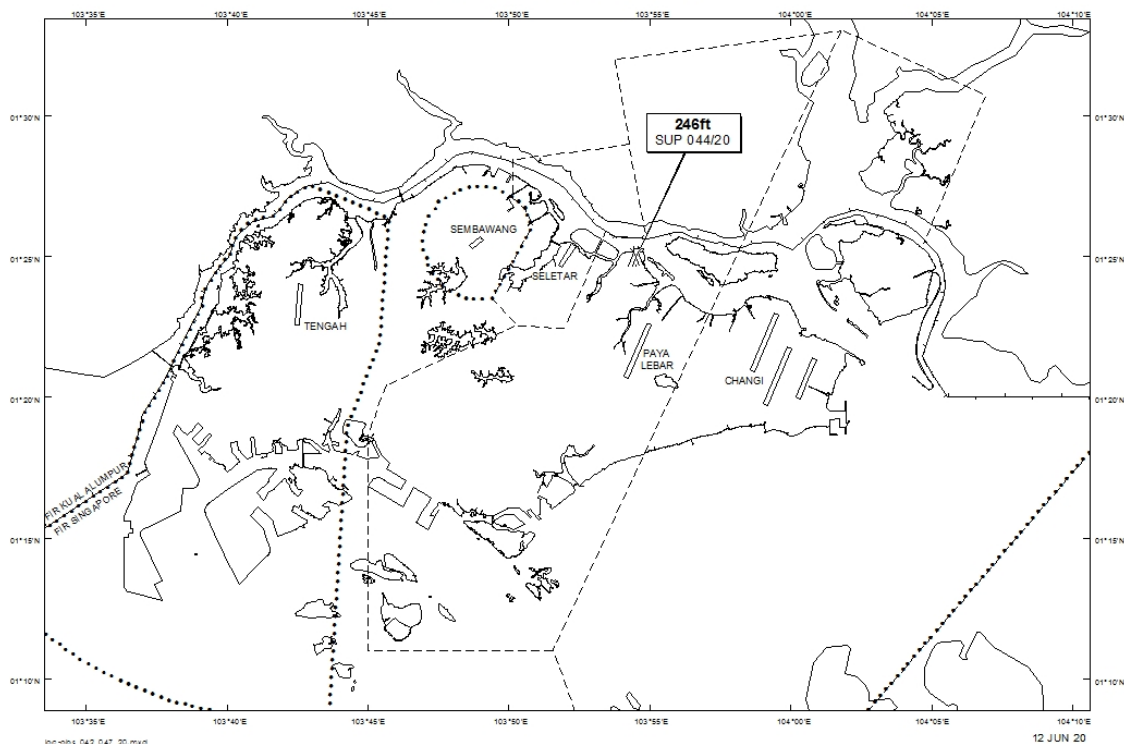
Tel: (65) 6422 7036

AFS: WSSSYNYX

Fax: (65) 64410221

Email: [caas\\_singaporeais@caas.gov.sg](mailto:caas_singaporeais@caas.gov.sg)URL: [www.caas.gov.sg](http://www.caas.gov.sg)URL: <https://aim-sg.caas.gov.sg>**AIP Supplement for  
Singapore****AIP SUP  
044/2020****Effective from 12 JUN 2020****/ 31 DEC 2021****Published on 12 JUN 2020****PAYA LEBAR AIRPORT – OBSTACLES**

WIE/2112311559 five crawler cranes, nine telescopic mobile cranes and three boring rigs, height 246ft AMSL, erected at 012458N 1035430E (bearing 5.1 degrees, distance 3.64nm from Paya Lebar ARP - within Paya Lebar Control Zone). Obstacles marked and lighted at night. (NOTAM A1625/20 dated 29/04/2020 is hereby superseded.)

**LOCATION OF OBSTACLES**

*PAGE INTENTIONALLY LEFT BLANK*