

Contact

Post:

REPUBLIC OF SINGAPORE
AERONAUTICAL
INFORMATION SERVICES
CIVIL AVIATION AUTHORITY
OF SINGAPORE
SINGAPORE CHANGI
AIRPORT
P.O. BOX 1, SINGAPORE
918141

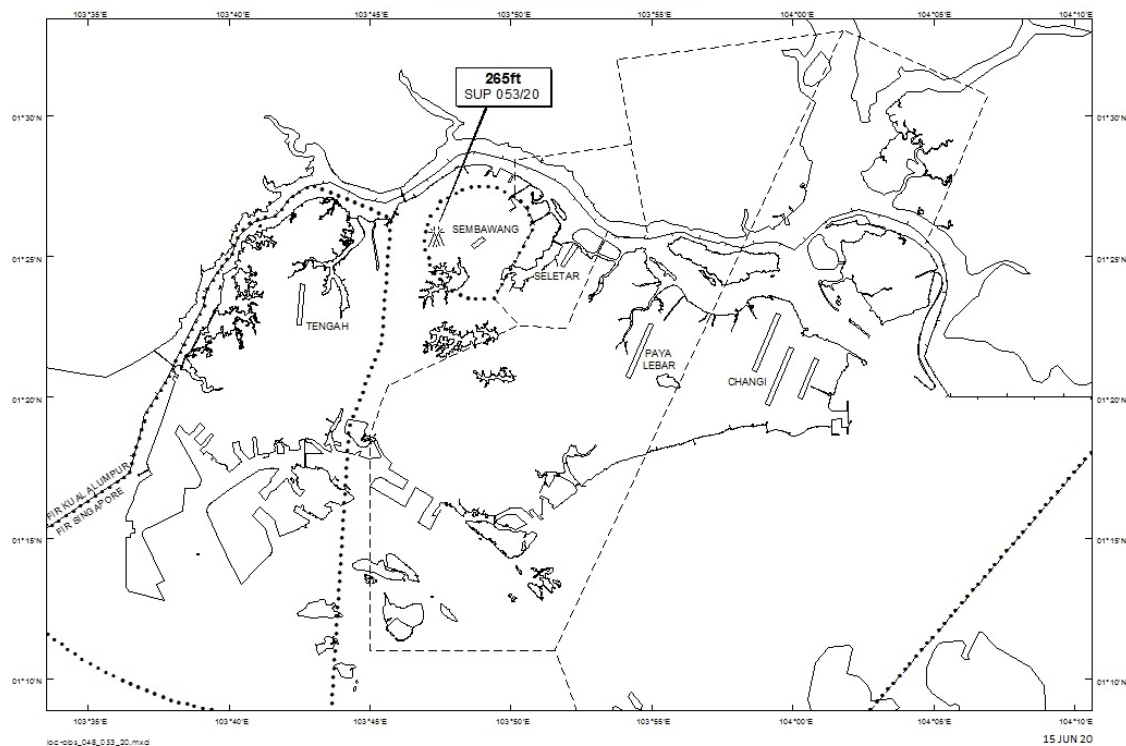
Tel: (65) 6422 7036

AFS: WSSSYNYX

Fax: (65) 64410221

Email: caas_singaporeais@caas.gov.sgURL: www.caas.gov.sgURL: <https://aim-sg.caas.gov.sg>**AIP Supplement for
Singapore****AIP SUP
053/2020****Effective from 15 JUN 2020****/ 30 DEC 2021****Published on 15 JUN 2020****SEMBAWANG AERODROME – SADDLE CRANES**

WIE/2112301559 eight saddle cranes, height 265ft AMSL, erected at 012542N 1034721E (bearing 256 degrees, distance 1.62nm from Sembawang ARP - within Sembawang Aerodrome Traffic Zone). Cranes marked and lighted at night. (NOTAM A2128/20 dated 11/06/2020 is hereby superseded.)

LOCATION OF OBSTACLES

PAGE INTENTIONALLY LEFT BLANK