

**Contact**

Post:

REPUBLIC OF SINGAPORE  
AERONAUTICAL  
INFORMATION SERVICES  
CIVIL AVIATION AUTHORITY  
OF SINGAPORE  
SINGAPORE CHANGI  
AIRPORT  
P.O. BOX 1, SINGAPORE  
918141

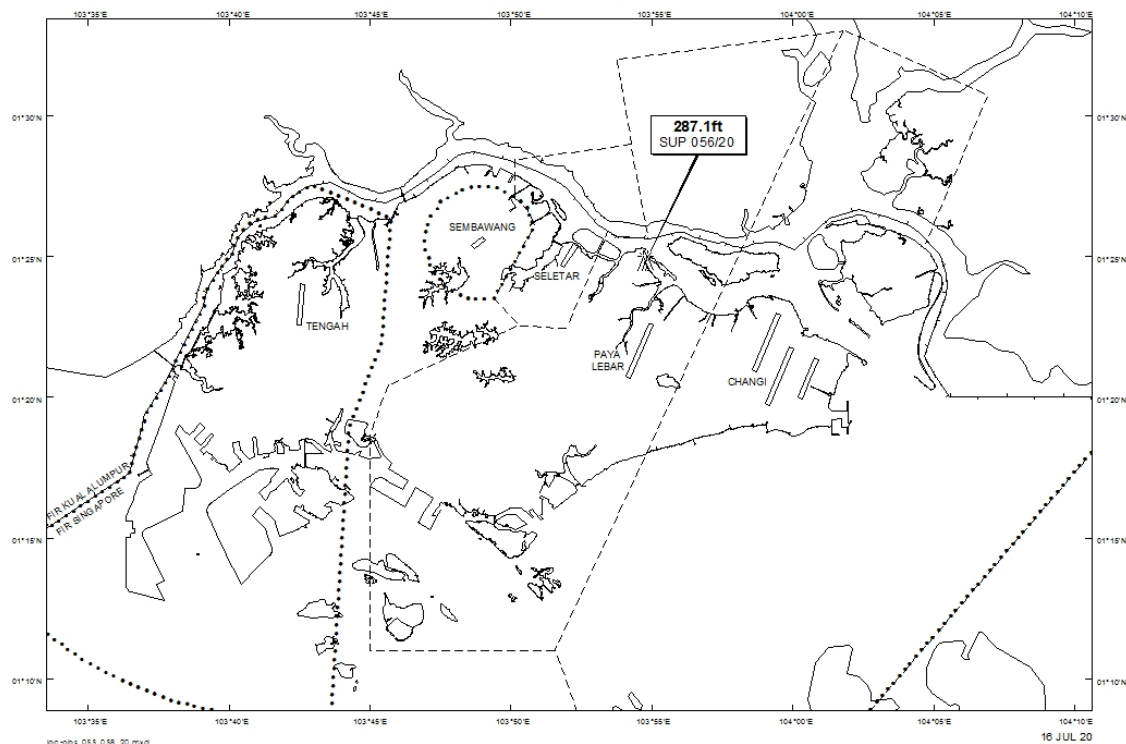
Tel: (65) 6422 7036

AFS: WSSSYNYX

Fax: (65) 64410221

Email: [caas\\_singaporeais@caas.gov.sg](mailto:caas_singaporeais@caas.gov.sg)URL: [www.caas.gov.sg](http://www.caas.gov.sg)URL: <https://aim-sg.caas.gov.sg>**AIP Supplement for  
Singapore****AIP SUP****056/2020****Effective from 16 JUL 2020****/ 30 DEC 2021****Published on 16 JUL 2020****PAYA LEBAR AIRPORT – FLAT TOP CRANES**

WIE/2112301559 four flat top cranes, height 287.1ft AMSL, erected at 012450N 1035446E (bearing 9.6 degrees, distance 3.54nm from Paya Lebar ARP - within Paya Lebar Control Zone). Cranes marked and lighted at night (NOTAM A2003/20 dated 01/06/2020 is hereby superseded.)

**LOCATION OF OBSTACLES**

*PAGE INTENTIONALLY LEFT BLANK*