

Contact

Post:

REPUBLIC OF SINGAPORE
AERONAUTICAL
INFORMATION SERVICES
CIVIL AVIATION AUTHORITY
OF SINGAPORE
SINGAPORE CHANGI
AIRPORT
P.O. BOX 1, SINGAPORE
918141

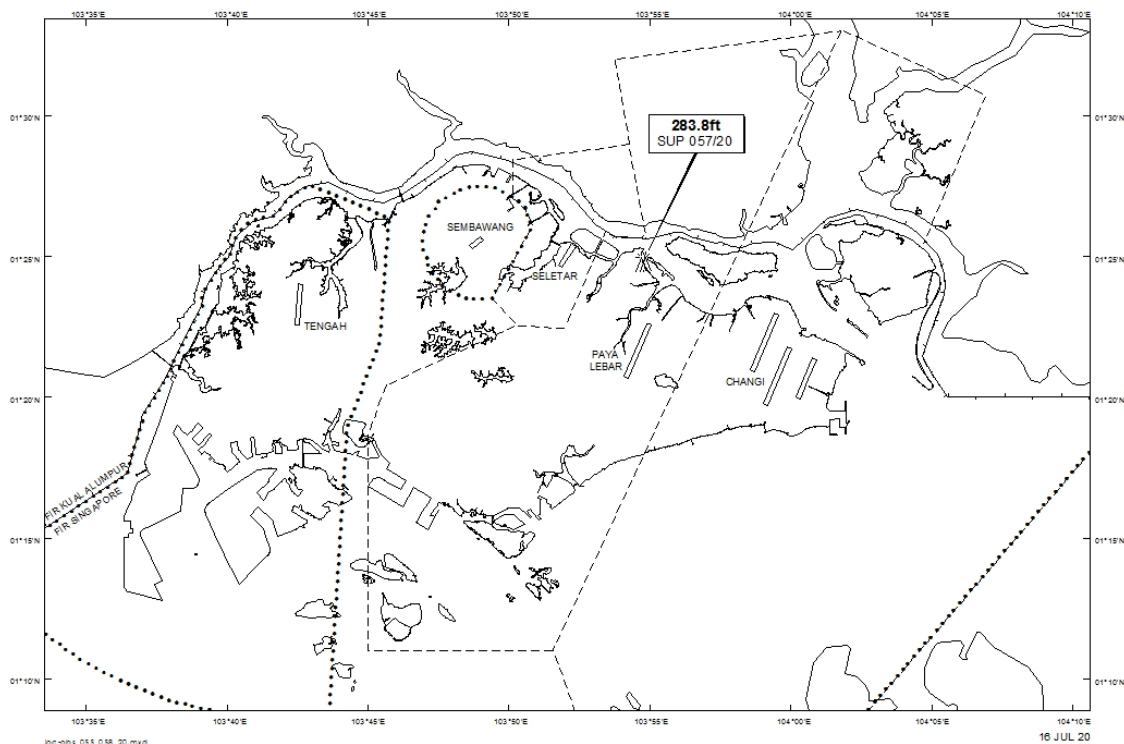
Tel: (65) 6422 7036

AFS: WSSSYNYX

Fax: (65) 64410221

Email: caas_singaporeais@caas.gov.sgURL: www.caas.gov.sgURL: <https://aim-sg.caas.gov.sg>**AIP Supplement for
Singapore****AIP SUP
057/2020****Effective from 16 JUL 2020****/ 30 DEC 2021****Published on 16 JUL 2020****PAYA LEBAR AIRPORT – FLAT TOP CRANES**

WIE/2112301559 three flat top cranes, height 283.8ft AMSL, erected at 012448N 1035447E (bearing 10 degrees, distance 3.51nm from Paya Lebar ARP - within Paya Lebar Control Zone). Cranes marked and lighted at night. (NOTAM A2002/20 dated 01/06/2020 is hereby superseded.)

LOCATION OF OBSTACLES

PAGE INTENTIONALLY LEFT BLANK