

**Contact**

Post:

REPUBLIC OF SINGAPORE  
AERONAUTICAL  
INFORMATION SERVICES  
CIVIL AVIATION AUTHORITY  
OF SINGAPORE  
SINGAPORE CHANGI  
AIRPORT  
P.O. BOX 1, SINGAPORE  
918141

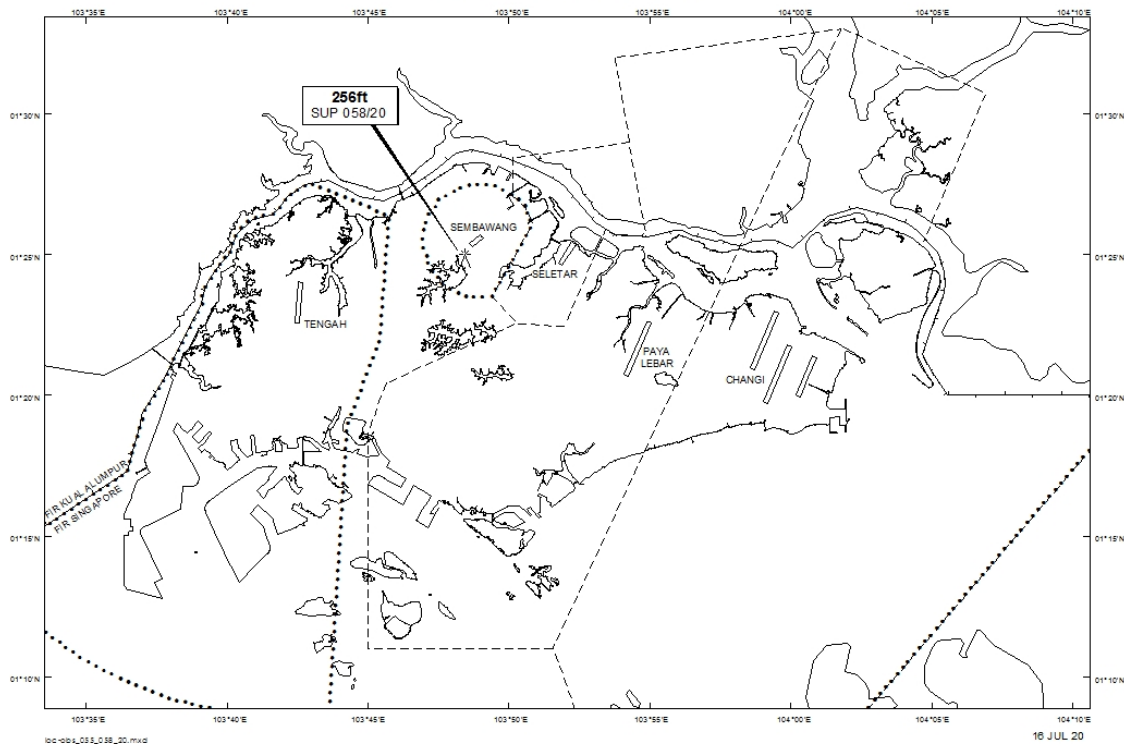
Tel: (65) 6422 7036

AFS: WSSSYNYX

Fax: (65) 64410221

Email: [caas\\_singaporeais@caas.gov.sg](mailto:caas_singaporeais@caas.gov.sg)URL: [www.caas.gov.sg](http://www.caas.gov.sg)URL: <https://aim-sg.caas.gov.sg>**AIP Supplement for  
Singapore****AIP SUP  
058/2020****Effective from 16 JUL 2020****/ 24 JUN 2021****Published on 16 JUL 2020****SEMBAWANG AERODROME – MOBILE CRANE**

WIE/2106241559 one mobile crane, height 256ft AMSL, erected at 012450N 1034826E (bearing 215 degrees, distance 0.93nm from Sembawang ARP - within Sembawang Aerodrome Traffic Zone). Crane marked and lighted at night. (NOTAM A2476/20 dated 08/07/2020 is hereby superseded.)

**LOCATION OF OBSTACLES**

*PAGE INTENTIONALLY LEFT BLANK*