

**Contact**

Post:

REPUBLIC OF SINGAPORE  
AERONAUTICAL  
INFORMATION SERVICES  
CIVIL AVIATION AUTHORITY  
OF SINGAPORE  
SINGAPORE CHANGI  
AIRPORT  
P.O. BOX 1, SINGAPORE  
918141

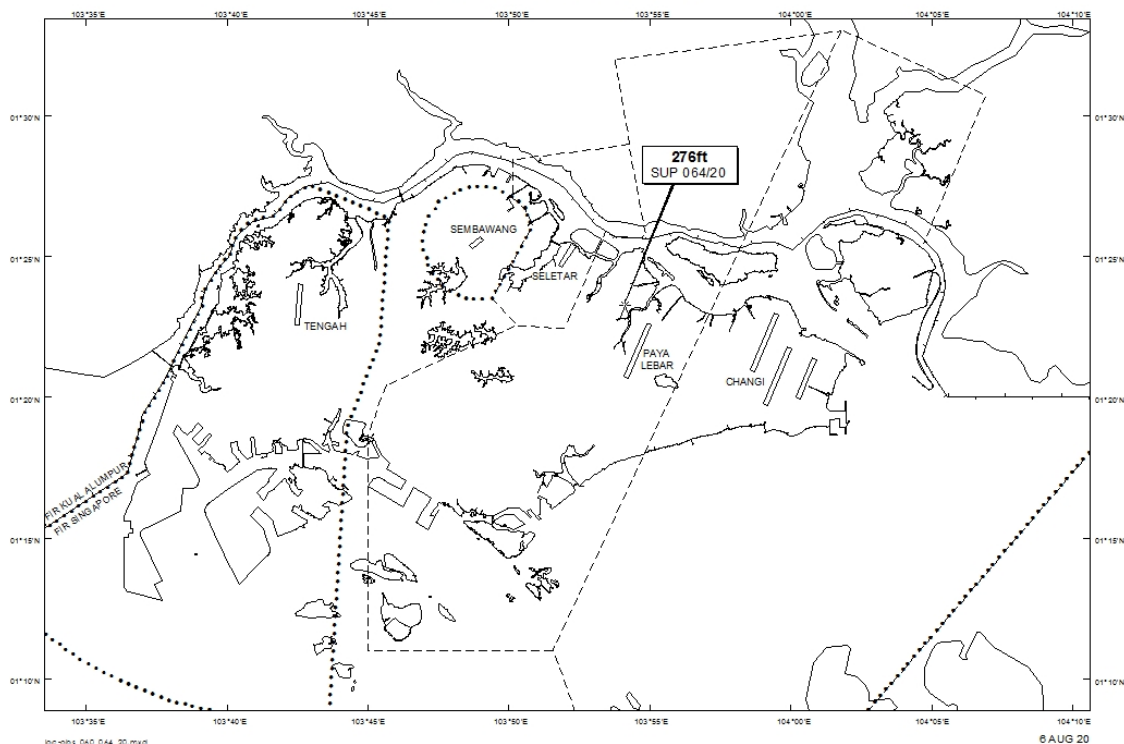
Tel: (65) 6422 7036

AFS: WSSSYNYX

Fax: (65) 64410221

Email: [caas\\_singaporeais@caas.gov.sg](mailto:caas_singaporeais@caas.gov.sg)URL: [www.caas.gov.sg](http://www.caas.gov.sg)URL: <https://aim-sg.caas.gov.sg>**AIP Supplement for  
Singapore****AIP SUP  
064/2020****Effective from 06 AUG 2020****/ 30 MAR 2021****Published on 06 AUG 2020****PAYA LEBAR AIRPORT – LUFFING CRANE**

WIE/2103301559 one luffing crane, height 276ft AMSL, erected at 012306N 1035407E (bearing 358.5 degrees, distance 1.77nm from Paya Lebar ARP - within Paya Lebar Control Zone). Crane marked and lighted at night. (NOTAM A2707/20 dated 26/07/2020 is hereby superseded.)

**LOCATION OF OBSTACLES**

*PAGE INTENTIONALLY LEFT BLANK*