

Contact

Post:

REPUBLIC OF SINGAPORE
AERONAUTICAL
INFORMATION SERVICES
CIVIL AVIATION AUTHORITY
OF SINGAPORE
SINGAPORE CHANGI
AIRPORT
P.O. BOX 1, SINGAPORE
918141

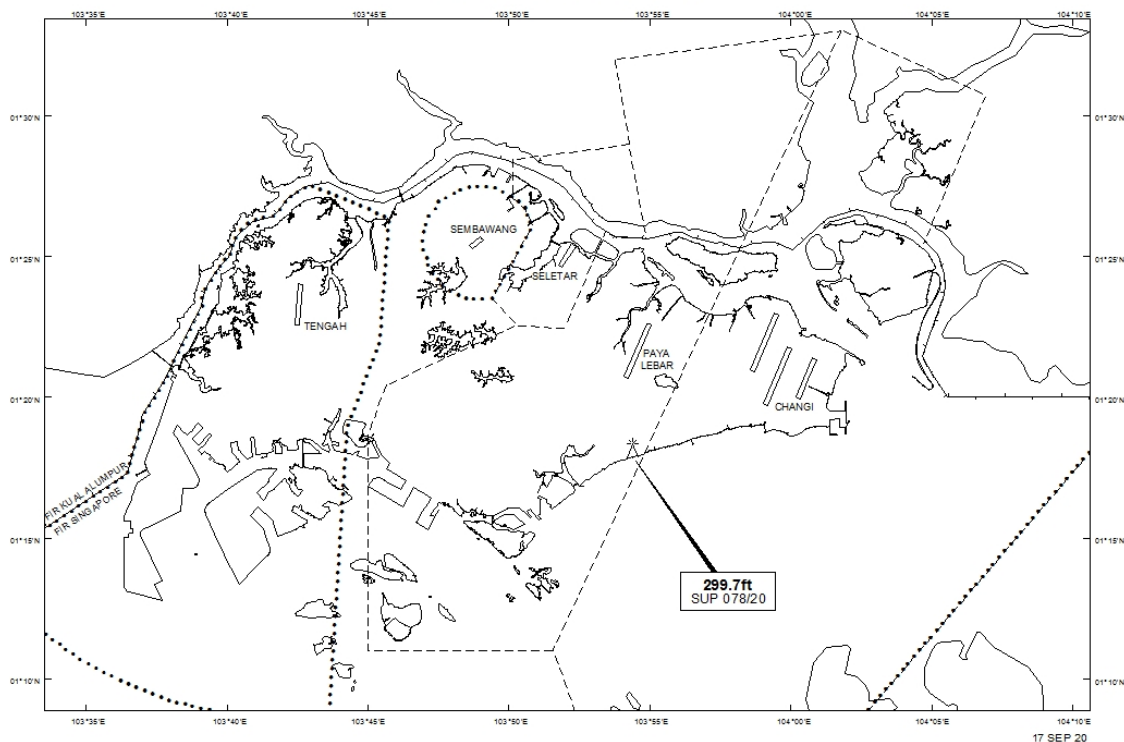
Tel: (65) 6422 7036

AFS: WSSSYNYX

Fax: (65) 64410221

Email: caas_singaporeais@caas.gov.sgURL: www.caas.gov.sgURL: <https://aim-sg.caas.gov.sg>**AIP Supplement for
Singapore****AIP SUP
078/2020****Effective from 17 SEP 2020****/ 06 AUG 2021****Published on 17 SEP 2020****PAYA LEBAR AIRPORT – LUFFER CRANE**

WIE/2108061559 one luffer crane, height 299.7ft AMSL, erected at 011810N 1035423E (bearing 176.1 degrees, distance 3.18nm from Paya Lebar ARP - within Paya Lebar Control Zone). Crane marked and lighted at night. (NOTAM A2985/20 dated 11/08/2020 is hereby superseded.)

LOCATION OF OBSTACLES

PAGE INTENTIONALLY LEFT BLANK