

Contact

Post:

REPUBLIC OF SINGAPORE
AERONAUTICAL
INFORMATION SERVICES
CIVIL AVIATION AUTHORITY
OF SINGAPORE
SINGAPORE CHANGI
AIRPORT
P.O. BOX 1, SINGAPORE
918141

Tel: (65) 6422 7036

AFS: WSSSYNYX

Fax: (65) 64410221

Email: caas_singaporeais@caas.gov.sgURL: www.caas.gov.sgURL: <https://aim-sg.caas.gov.sg>

AIP Supplement for Singapore



**AIP SUP
080/2020**

Effective from 17 SEP 2020

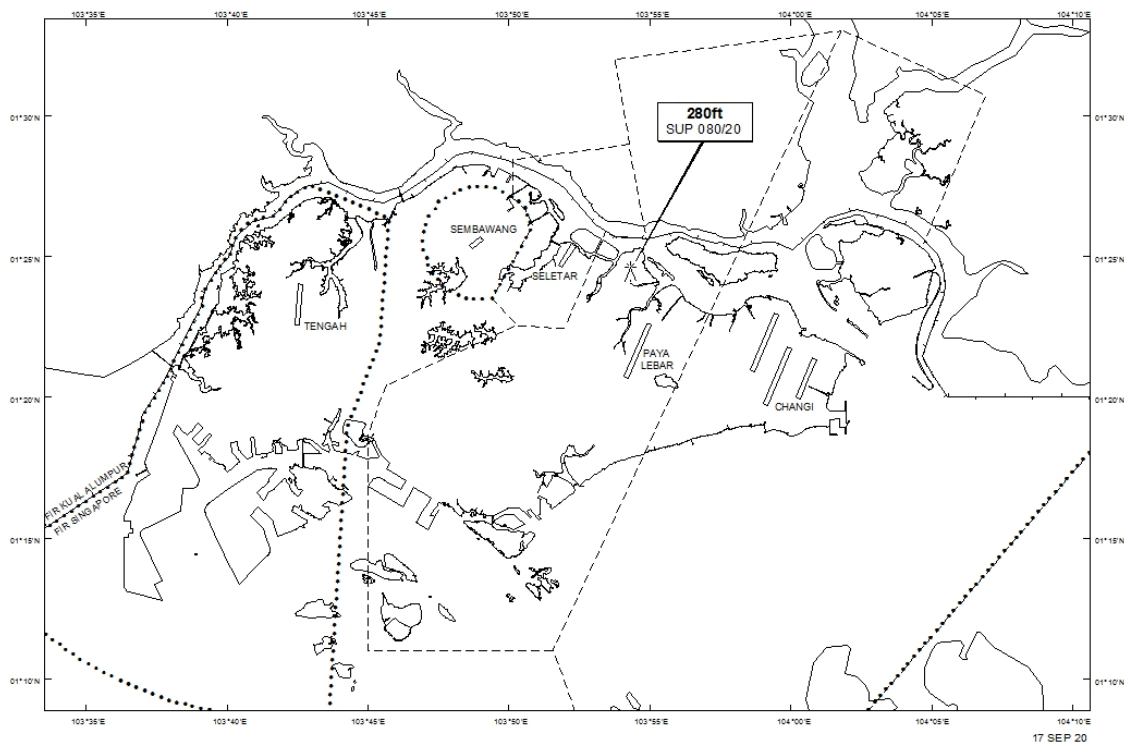
/ 30 JUN 2021

Published on 17 SEP 2020

PAYA LEBAR AIRPORT – MOBILE CRANE

WIE/2106301559 one mobile crane, height 280ft AMSL, erected at 012427N 1035419E (bearing 2.8 degrees, distance 3.11 nm from Paya Lebar ARP - within Paya Lebar Control Zone). Crane marked and lighted at night. (NOTAM A2955/20 dated 06/08/2020 is hereby superseded.)

LOCATION OF OBSTACLES



PAGE INTENTIONALLY LEFT BLANK