

Contact

Post:

REPUBLIC OF SINGAPORE
AERONAUTICAL
INFORMATION SERVICES
CIVIL AVIATION AUTHORITY
OF SINGAPORE
SINGAPORE CHANGI
AIRPORT
P.O. BOX 1, SINGAPORE
918141

Tel: (65) 6422 7036

AFS: WSSSYNYX

Fax: (65) 64410221

Email: caas_singaporeais@caas.gov.sgURL: www.caas.gov.sgURL: <https://aim-sg.caas.gov.sg>

AIP Supplement for Singapore



AIP SUP
092/2020

Effective from 08 OCT 2020

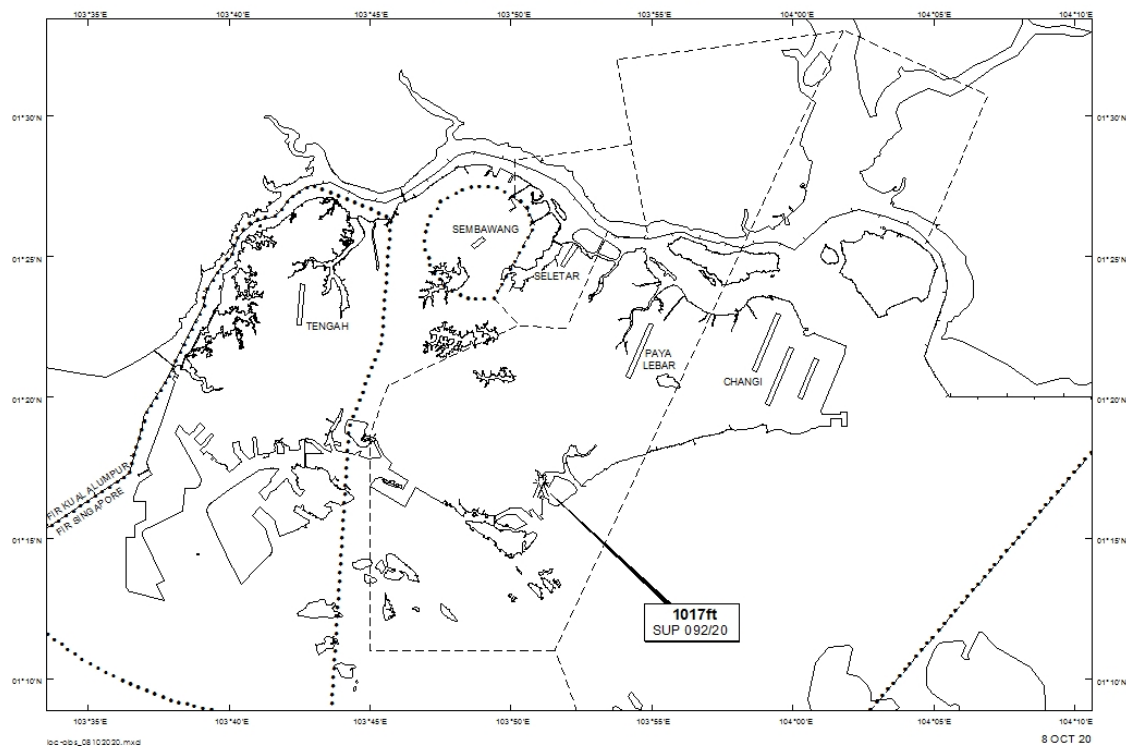
/ 31 DEC 2021

Published on 08 OCT 2020

PAYA LEBAR AIRPORT – LUFFER CRANES

WIE/2112311559 five luffer cranes, height 1017ft AMSL, erected at 011648N 1035104E (bearing 214 degrees, distance 5.49nm from Paya Lebar ARP - within Paya Lebar Control Zone). Cranes marked and lighted at night. (NOTAM A3656/20 dated 24/09/2020 is hereby superseded.)

LOCATION OF OBSTACLES



PAGE INTENTIONALLY LEFT BLANK