

Contact

Post:

REPUBLIC OF SINGAPORE
AERONAUTICAL
INFORMATION SERVICES
CIVIL AVIATION AUTHORITY
OF SINGAPORE
SINGAPORE CHANGI
AIRPORT
P.O. BOX 1, SINGAPORE
918141

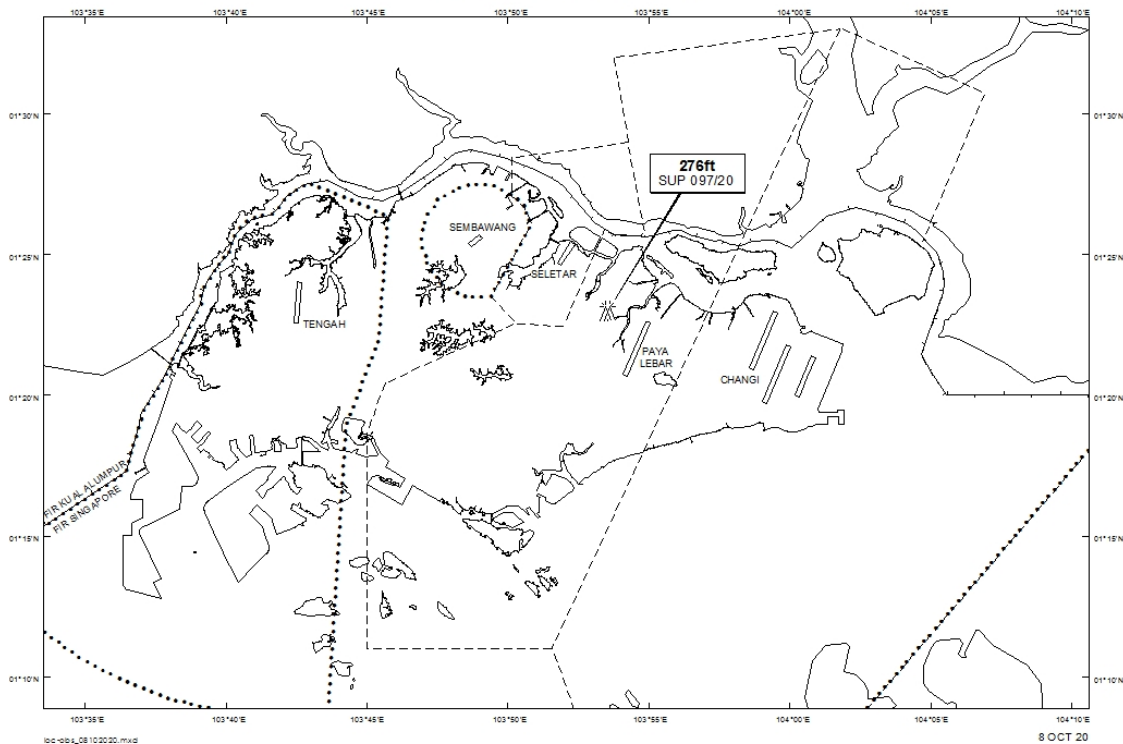
Tel: (65) 6422 7036

AFS: WSSSYNYX

Fax: (65) 64410221

Email: caas_singaporeais@caas.gov.sgURL: www.caas.gov.sgURL: <https://aim-sg.caas.gov.sg>**AIP Supplement for
Singapore****AIP SUP
097/2020****Effective from 08 OCT 2020****/ 31 DEC 2021****Published on 08 OCT 2020****PAYA LEBAR AIRPORT – SADDLE CRANES**

WIE/2112311559 eight saddle cranes, height 276ft AMSL, erected at 012259N 1035332E (bearing 338.9 degrees, distance 1.76nm from Paya Lebar ARP - within Paya Lebar Control Zone). Cranes marked and lighted at night. (NOTAM A3424/20 dated 04/09/2020 is hereby superseded.)

LOCATION OF OBSTACLES

PAGE INTENTIONALLY LEFT BLANK