

**Contact**

Post:

REPUBLIC OF SINGAPORE  
AERONAUTICAL  
INFORMATION SERVICES  
CIVIL AVIATION AUTHORITY  
OF SINGAPORE  
SINGAPORE CHANGI  
AIRPORT  
P.O. BOX 1, SINGAPORE  
918141

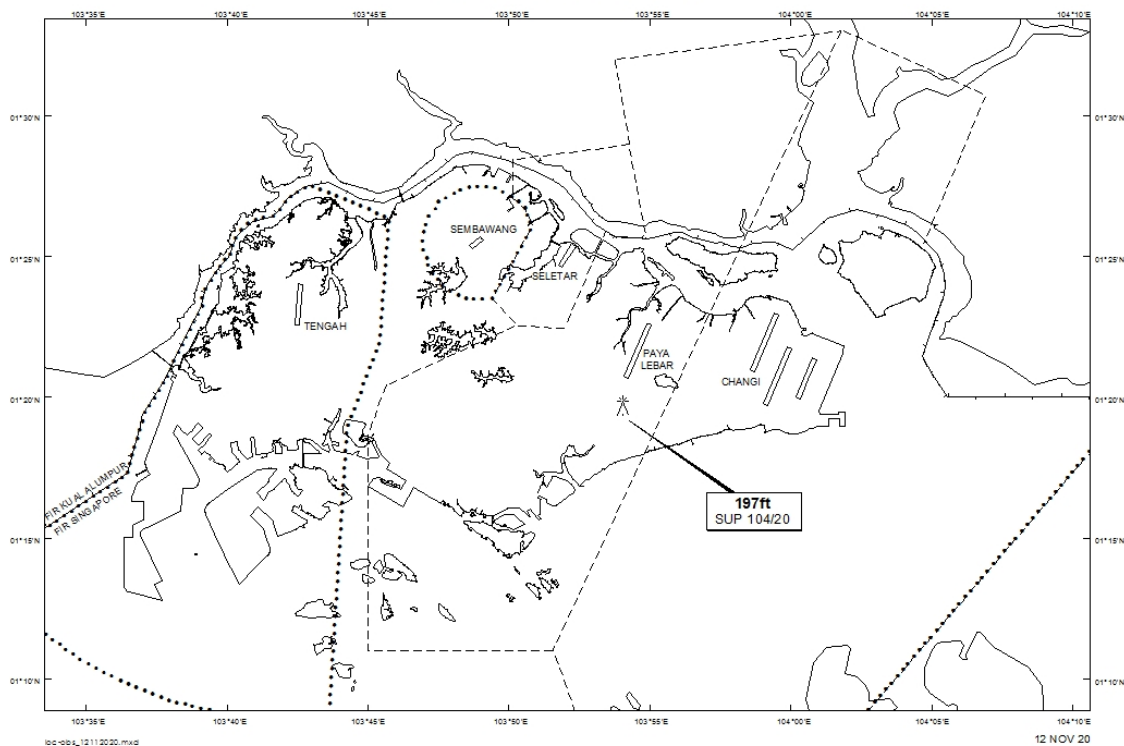
Tel: (65) 6422 7036

AFS: WSSSYNYX

Fax: (65) 64410221

Email: [caas\\_singaporeais@caas.gov.sg](mailto:caas_singaporeais@caas.gov.sg)URL: [www.caas.gov.sg](http://www.caas.gov.sg)URL: <https://aim-sg.caas.gov.sg>**AIP Supplement for  
Singapore****AIP SUP  
104/2020****Effective from 12 NOV 2020****/ 01 JAN 2022****Published on 12 NOV 2020****PAYA LEBAR AIRPORT – CRAWLER TOWER CRANE**

WIE/2201011559 one crawler tower crane, height 197ft AMSL, erected at 011941N1035403E (bearing 184.3 degrees, distance 1.67nm from Paya Lebar ARP – within Paya Lebar Control Zone). Crane marked and lighted at night. (NOTAM A4386/20 dated 30/10/2020 is hereby superseded.)

**LOCATION OF OBSTACLES**

*PAGE INTENTIONALLY LEFT BLANK*