

**Contact**

Post:

REPUBLIC OF SINGAPORE  
AERONAUTICAL  
INFORMATION SERVICES  
CIVIL AVIATION AUTHORITY  
OF SINGAPORE  
SINGAPORE CHANGI  
AIRPORT  
P.O. BOX 1, SINGAPORE  
918141

Tel: (65) 6422 7036

AFS: WSSSYNYX

Fax: (65) 64410221

Email: [caas\\_singaporeais@caas.gov.sg](mailto:caas_singaporeais@caas.gov.sg)URL: [www.caas.gov.sg](http://www.caas.gov.sg)URL: <https://aim-sg.caas.gov.sg>

## AIP Supplement for Singapore



**AIP SUP**  
**013/2021**

Effective from 14 JAN 2021

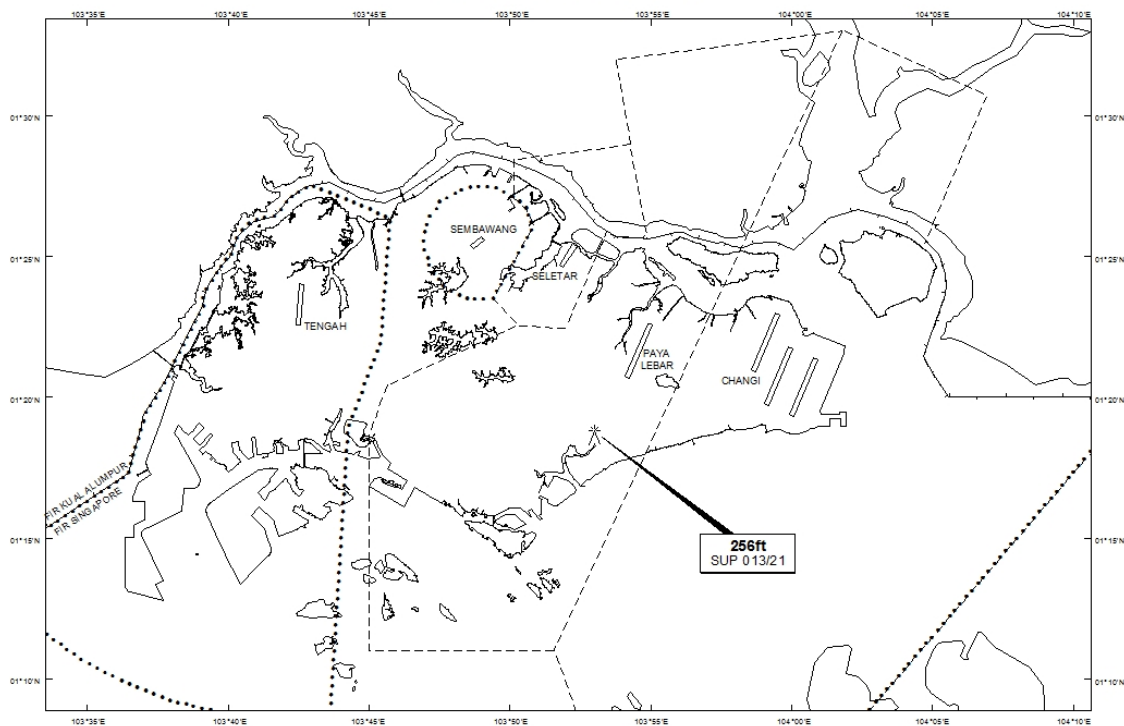
/ 31 DEC 2021

Published on 14 JAN 2021

### PAYA LEBAR AIRPORT – LUFFING CRANE

WIE/2112311559 one luffing crane, height 256ft AMSL, erected at 011840N 1035301E (bearing 203.2 degrees, distance 2.91nm from Paya Lebar ARP - within Paya Lebar Control Zone). Crane marked and lighted at night. (NOTAM A5237/20 dated 14/12/2020 is hereby superseded.)

#### LOCATION OF OBSTACLES



*PAGE INTENTIONALLY LEFT BLANK*