

Contact

Post:

REPUBLIC OF SINGAPORE
AERONAUTICAL
INFORMATION SERVICES
CIVIL AVIATION AUTHORITY
OF SINGAPORE
SINGAPORE CHANGI
AIRPORT
P.O. BOX 1, SINGAPORE
918141

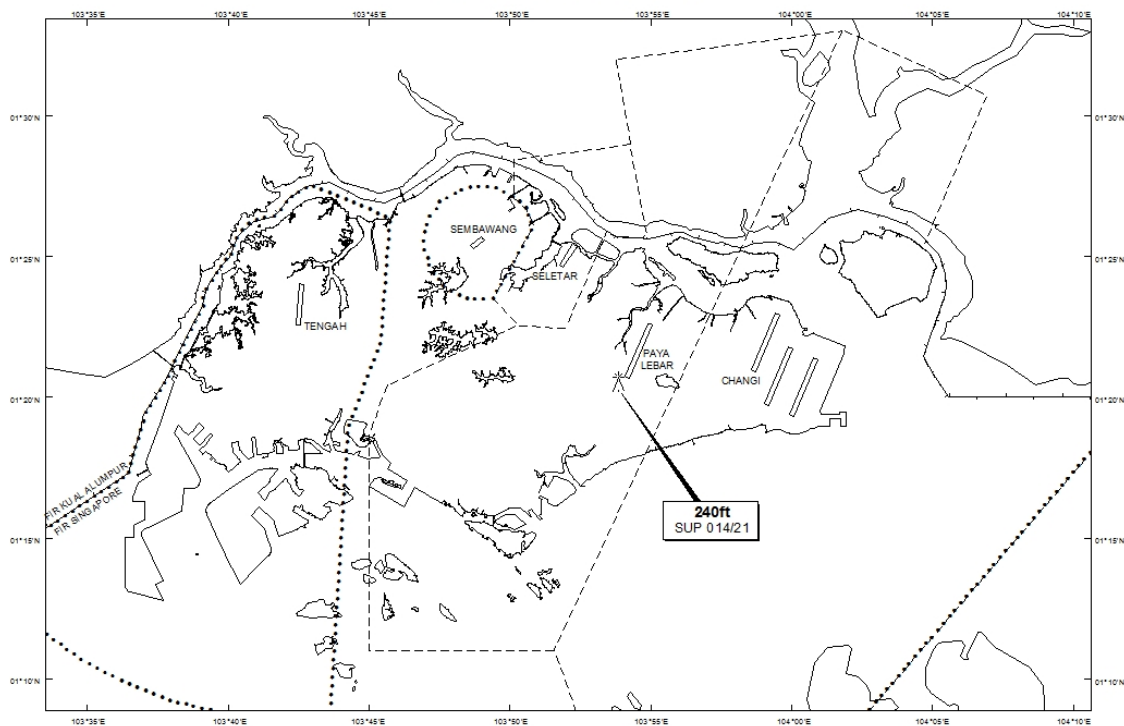
Tel: (65) 6422 7036

AFS: WSSSYNYX

Fax: (65) 64410221

Email: caas_singaporeais@caas.gov.sgURL: www.caas.gov.sgURL: <https://aim-sg.caas.gov.sg>**AIP Supplement for
Singapore****AIP SUP
014/2021****Effective from 14 JAN 2021****/ 01 JUN 2021****Published on 14 JAN 2021****PAYA LEBAR AIRPORT – MOBILE CRANE**

WIE/2106011559 one mobile crane, height 240ft AMSL, erected at 012033N 103535E (bearing 201.7 degrees, distance 0.85nm from Paya Lebar ARP - within Paya Lebar Control Zone). Crane marked and lighted at night. (NOTAM A5143/20 dated 09/12/2020 is hereby superseded.)

LOCATION OF OBSTACLES

PAGE INTENTIONALLY LEFT BLANK