

Contact

Post:

REPUBLIC OF SINGAPORE
AERONAUTICAL
INFORMATION SERVICES
CIVIL AVIATION AUTHORITY
OF SINGAPORE
SINGAPORE CHANGI
AIRPORT
P.O. BOX 1, SINGAPORE
918141

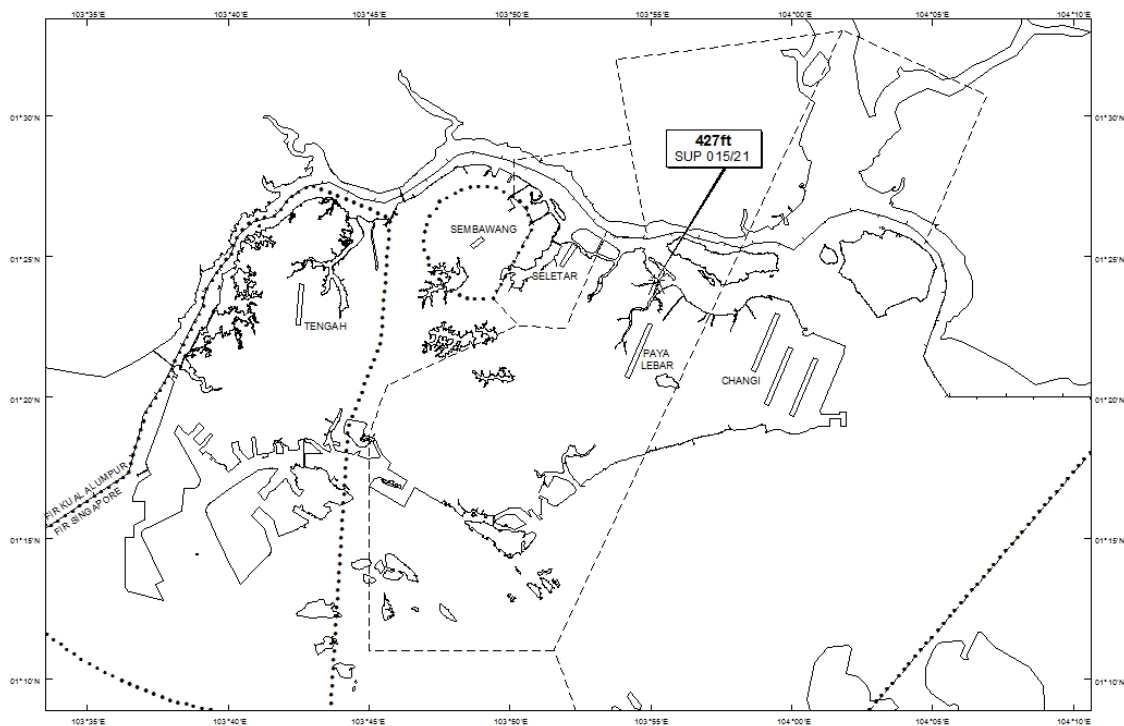
Tel: (65) 6422 7036

AFS: WSSSYNYX

Fax: (65) 64410221

Email: caas_singaporeais@caas.gov.sgURL: www.caas.gov.sgURL: <https://aim-sg.caas.gov.sg>**AIP Supplement for
Singapore****AIP SUP
015/2021****Effective from 14 JAN 2021****/ 01 NOV 2021****Published on 14 JAN 2021****PAYA LEBAR AIRPORT – CRANES**

WIE/2111011559 three mobile cranes and two crawler cranes, height 427ft AMSL, erected at 012359N 1035512E (bearing 23.4 degrees, distance 2.86nm from Paya Lebar ARP - within Paya Lebar Control Zone). Cranes marked and lighted at night. (NOTAM A4898/20 dated 01/12/2020 is hereby superseded.)

LOCATION OF OBSTACLES

PAGE INTENTIONALLY LEFT BLANK