

Contact

Post:

REPUBLIC OF SINGAPORE
AERONAUTICAL
INFORMATION SERVICES
CIVIL AVIATION AUTHORITY
OF SINGAPORE
SINGAPORE CHANGI
AIRPORT
P.O. BOX 1, SINGAPORE
918141

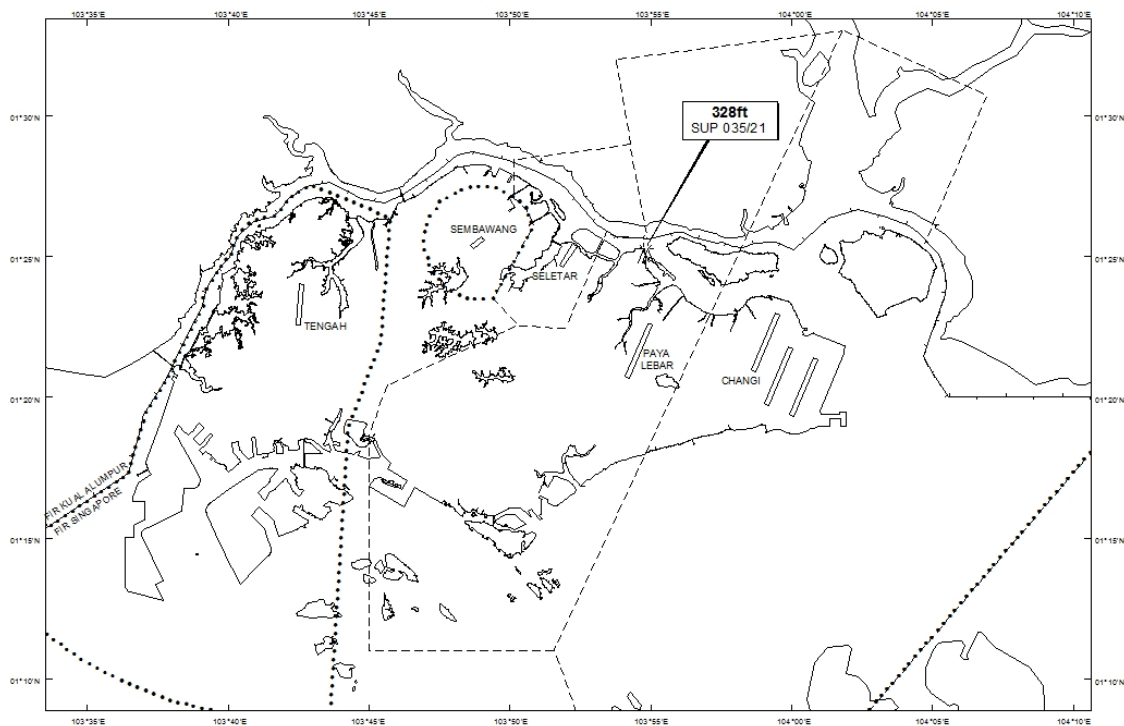
Tel: (65) 6422 7036

AFS: WSSSYNYX

Fax: (65) 64410221

Email: caas_singaporeais@caas.gov.sgURL: www.caas.gov.sgURL: <https://aim-sg.caas.gov.sg>**AIP Supplement for
Singapore****AIP SUP
035/2021****Effective from 08 FEB 2021****/ 01 FEB 2022****Published on 08 FEB 2021****PAYA LEBAR AIRPORT – CRANES**

WIE/2202011559 seven topless cranes and four luffer cranes, height 328ft AMSL, erected at 012507N 1035449E (bearing 9.8 degrees, distance 3.83nm from Paya Lebar ARP - within Paya Lebar Control Zone). Cranes marked and lighted at night. (NOTAM A0467/21 dated 27/01/2021 is hereby superseded.)

LOCATION OF OBSTACLES

PAGE INTENTIONALLY LEFT BLANK