

Contact

Post:

REPUBLIC OF SINGAPORE
AERONAUTICAL
INFORMATION SERVICES
CIVIL AVIATION AUTHORITY
OF SINGAPORE
SINGAPORE CHANGI
AIRPORT
P.O. BOX 1, SINGAPORE
918141

Tel: (65) 6422 7036

AFS: WSSSYNYX

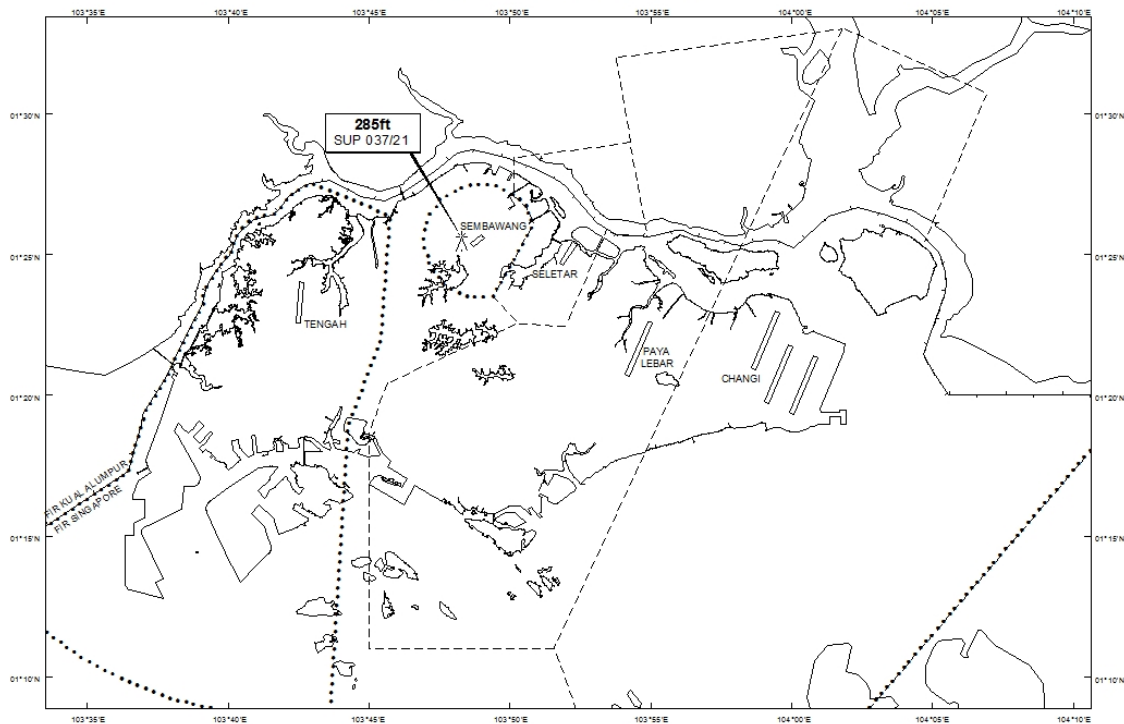
Fax: (65) 64410221

Email: caas_singaporeais@caas.gov.sgURL: www.caas.gov.sgURL: <https://aim-sg.caas.gov.sg>**AIP Supplement for
Singapore****AIP SUP
037/2021**

**Effective from 08 FEB 2021
/ 31 DEC 2021
Published on 08 FEB 2021**

SEMBAWANG AERODROME – CRAWLER CRANE

WIE/2112311600 one crawler crane, height 285ft AMSL, erected at 012527N 1034818E (bearing 257.3 degrees, distance 0.68nm from Sembawang ARP – within Sembawang Aerodrome Traffic Zone). Crane marked and lighted at night. (NOTAM A0276/21 dated 18/01/2021 is hereby superseded.)

LOCATION OF OBSTACLES

PAGE INTENTIONALLY LEFT BLANK