

**Contact**

Post:

REPUBLIC OF SINGAPORE  
AERONAUTICAL  
INFORMATION SERVICES  
CIVIL AVIATION AUTHORITY  
OF SINGAPORE  
SINGAPORE CHANGI  
AIRPORT  
P.O. BOX 1, SINGAPORE  
918141

Tel: (65) 6422 7036

AFS: WSSSYNYX

Fax: (65) 64410221

Email: [caas\\_singaporeais@caas.gov.sg](mailto:caas_singaporeais@caas.gov.sg)URL: [www.caas.gov.sg](http://www.caas.gov.sg)URL: <https://aim-sg.caas.gov.sg>

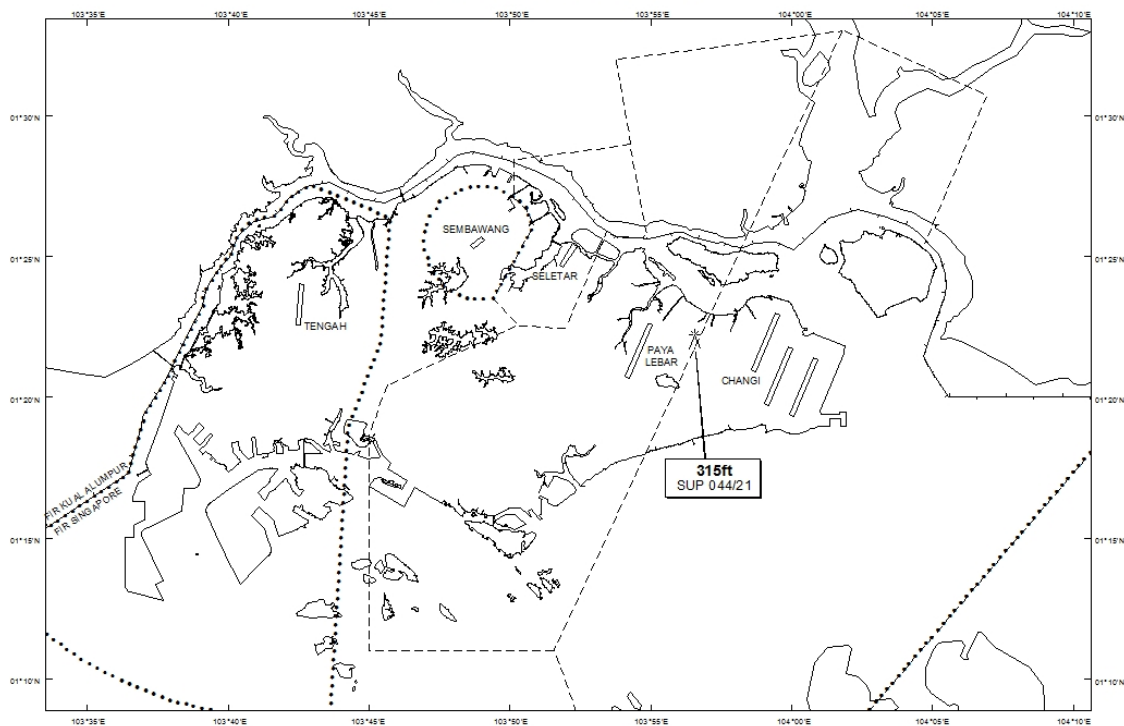
## AIP Supplement for Singapore

**AIP SUP****044/2021****Effective from 08 MAR 2021****/ 01 JUL 2021****Published on 08 MAR 2021**

### PAYA LEBAR AIRPORT – MOBILE CRANE

WIE/2107011559 one mobile crane, height 315ft AMSL, erected at 012203N 1035633E (bearing 73.6 degrees, distance 2.48nm from Paya Lebar ARP - within Paya Lebar Control Zone). Crane marked and lighted at night. (NOTAM A0681/21 dated 09/02/2021 is hereby superseded.)

#### LOCATION OF OBSTACLES



*PAGE INTENTIONALLY LEFT BLANK*