

Contact

Post:

REPUBLIC OF SINGAPORE
AERONAUTICAL
INFORMATION SERVICES
CIVIL AVIATION AUTHORITY
OF SINGAPORE
SINGAPORE CHANGI
AIRPORT
P.O. BOX 1, SINGAPORE
918141

Tel: (65) 6422 7036

AFS: WSSSYNYX

Fax: (65) 64410221

Email: caas_singaporeais@caas.gov.sgURL: www.caas.gov.sgURL: <https://aim-sg.caas.gov.sg>

AIP Supplement for Singapore



**AIRAC AIP SUP
041/2020**

Effective from 13 AUG 2020

PERM

Published on 04 JUN 2020

SINGAPORE CHANGI AIRPORT - RE-DESIGNATION OF TAXIWAYS AND TAXILANES (PHASE 3)

1 INTRODUCTION

1.1 Singapore Changi Airport will be carrying out works to re-designate the taxiways and taxilanes over a few phases to optimise the taxiway and taxilane designations to facilitate future airport expansion.

2 RE-DESIGNATION OF TAXIWAYS AND TAXILANES (PHASE 3)

2.1 Phase 3 of the re-designation of taxiways and taxilanes will be carried out during the night between 1630UTC and 2130UTC on 13 August 2020.

3 NEW TAXIWAY AND TAXILANE DESIGNATIONS

3.1 The new taxiway and taxilane designations for the affected taxiways and taxilanes are shown below and in **Chart 1**:

Current taxiway / taxilane designations	New taxiway / taxilane designations
WP	W
WA	V
VZ	V5
VY	V6
V6	V7
V7	V8
V8	V9
U3	V10
U4	V11
U2	V12
U1	V13

3.2 The new taxiway and taxilane designations will be effective as of 1845UTC on 13 August 2020.

4 WORK ZONES AND CLOSURES OF AFFECTED TAXIWAYS AND TAXILANES

4.1 Details of the work zones and corresponding closure of affected taxiways and taxilanes are tabulated below and shown in **Chart 2** and **Chart 3**.

Work zone	Closure of affected taxiways and taxilanes	Closure time on 13 August 2020
Zone 1	TWY WP between TWY W1 and TWY W7, including Junction of TWY WP and TWY W1	From 1630UTC to 1900UTC
	TWY WA between TWY N and up to behind aircraft stand A4, including Junction of TWY WA and TWY N.	
	TWY N2	
	TWY U1	
	TWY W1	
	TWY W2	
	TWY W3	
	TWY W4	
	TWY W5	
	TWY W6	
	TWY W7 Northbound	
	TWY V1	
	TWY V2	
	TWY V3	
	TWY V4	
	TWY VZ	
	TWY VY	
TWY V6		
TXL V6		
TWY N between TWY WP and TWY N2, including Junction of TWY N and TWY N2		
TWY P between TWY WP and TWY WA, including Junction of TWY P and TWY WA		
TWY Q between TWY WP and TXL Q1		
Zone 2	TWY WP between TWY W7 and TWY W10, including Junction of TWY WP and TWY W10	From 1830UTC to 2130UTC
	TWY WA between TWY V7 and TWY S1, including Junction of TWY WA and TWY V7	
	TWY U2 between aircraft stand A10 and aircraft stand A16	
	TWY U3	
	TXL U4	
	TWY W7 Southbound	
	TWY W8	
	TWY W9	
	TWY W10	
	TWY V7	
	TWY V8	
	TWY SC1 between TWY WP and TXL C6	
	TWY SC2 between TWY WP and TXL C6	
	TWY S1, including Junction of TWY S1 and TWY S2	
	TWY S2 between TWY S4 and TWY S1	
TWY S3 between TWY S4 and TWY S1		
Zone3	TWY U2 between aircraft stand A4 and aircraft stand A10	From 1830UTC to 1900UTC

4.2 Delays to aircraft movements may occur during the works and immediately after the new taxiway and taxilane designations are effective. Follow-me vehicles may be deployed during the period of works to facilitate unforeseen towing requests, if operationally necessary.

4.3 Re-designation works will be carried out during scheduled Runway 02L/20R closure. In the event of emergency re-opening of Runway 02L/20R, fixed dedicated access routes via “TWY P – TWY WP – TWY W2” or “TWY W9 – TWY SC1” will be provided. These access routes will be activated depending on the mode of operation during emergency. (See **Chart 4**)

4.4 The updated taxiway and taxilane designations in the Changi Aerodrome Chart are shown in **Chart 5, Chart 6 and Chart 7**.

5 CANCELLATION

5.1 Any changes to the contents of this AIP Supplement will be notified through NOTAM.

5.2 This AIP Supplement will remain current until the information is incorporated into AIP Singapore.

New taxiway and taxilane designations	Chart 1
Taxiways and taxilanes closure - work zone 1	Chart 2
Taxiways and taxilanes closure - work zones 2 AND 3	Chart 3
Runway 02L/20R Emergency re-opening route	Chart 4
Updated taxiway and taxilane designations	Chart 5
Updated taxiway and taxilane designations (Enlarged - Part 1)	Chart 6
Updated taxiway and taxilane designations (Enlarged - Part 2)	Chart 7

PAGE INTENTIONALLY LEFT BLANK

NEW TAXIWAY AND TAXILANE DESIGNATIONS

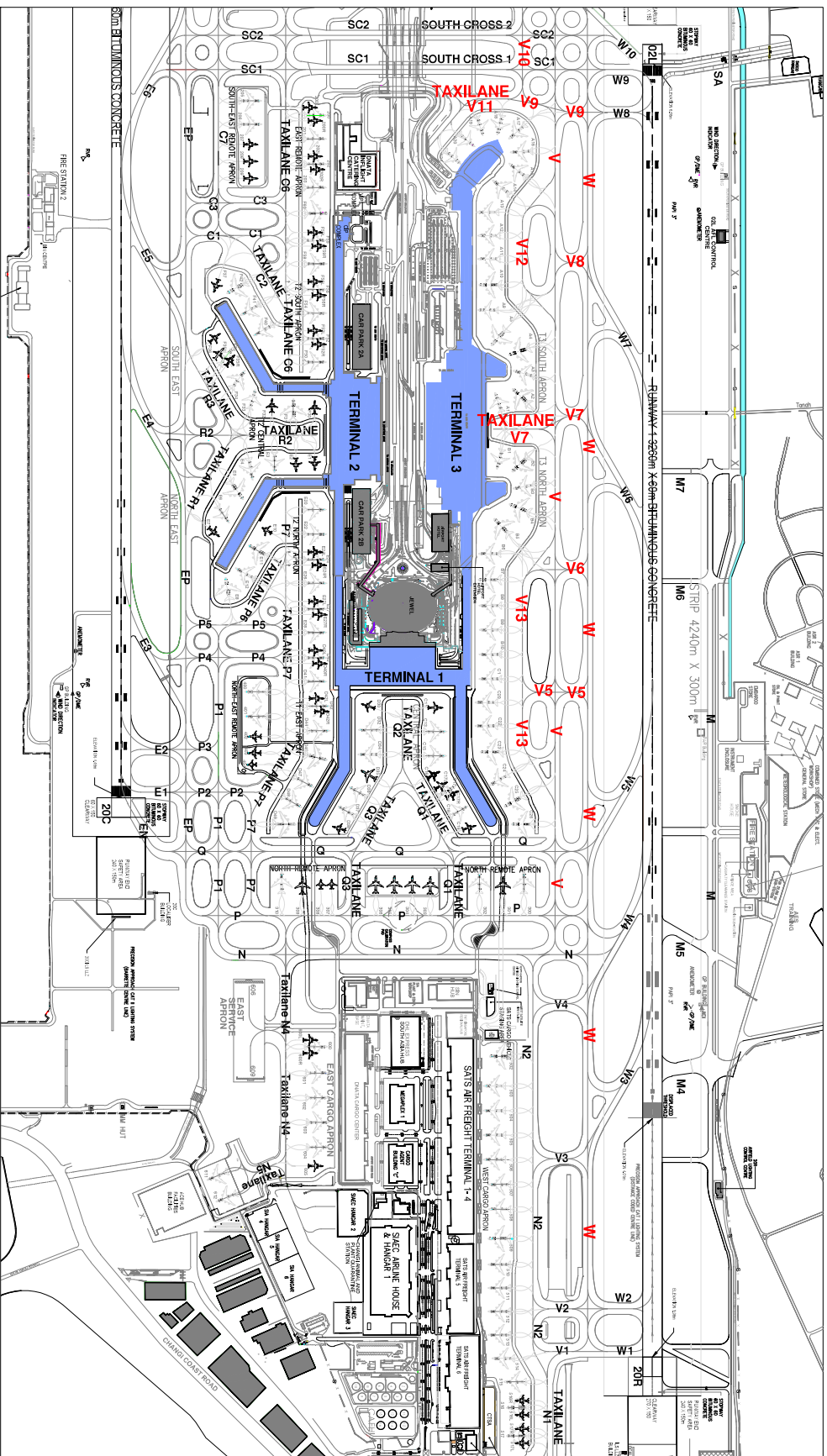
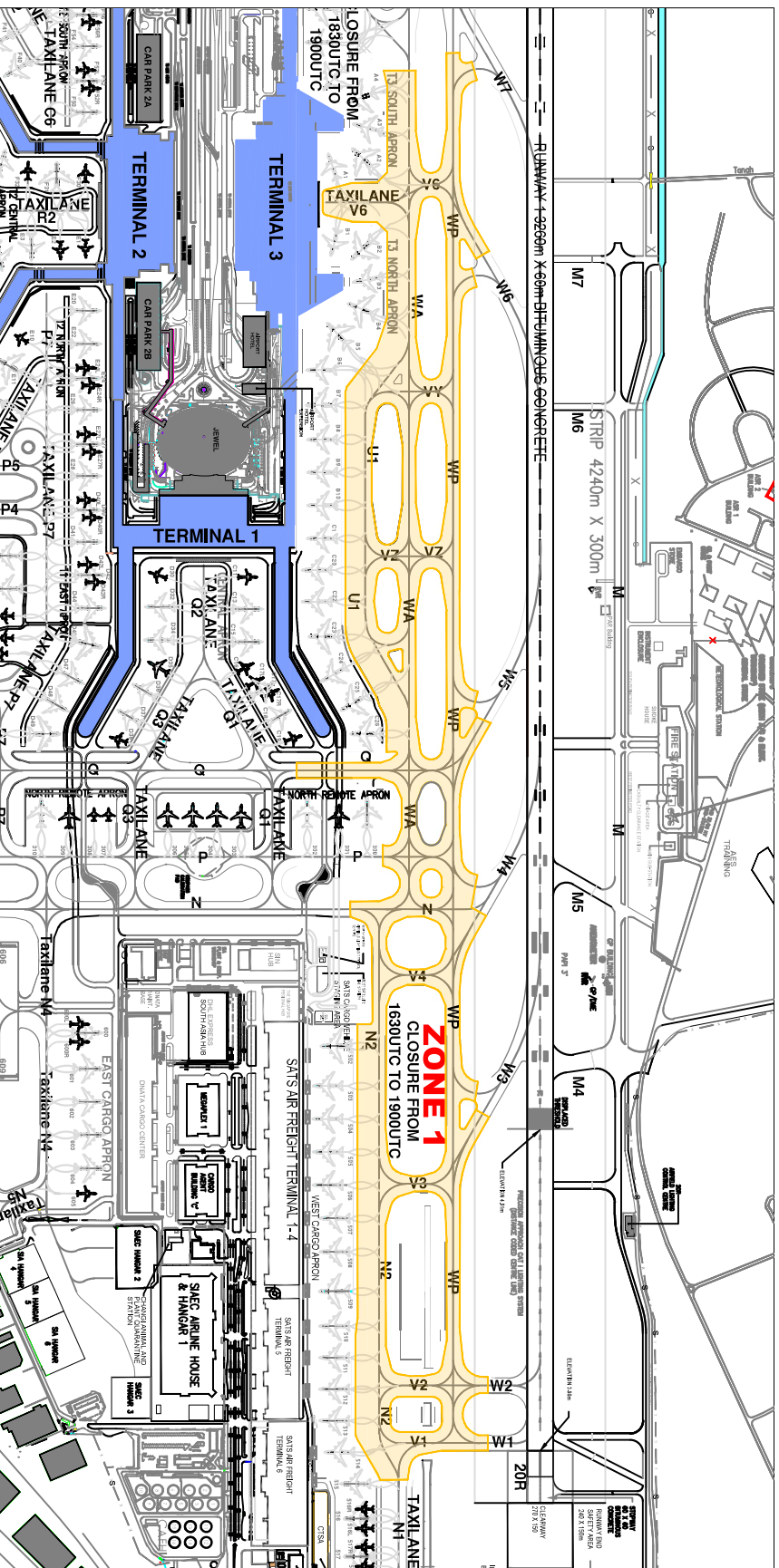


CHART 1

PAGE INTENTIONALLY LEFT BLANK

TAXIWAYS AND TAXILANES CLOSURE - WORK ZONE 1

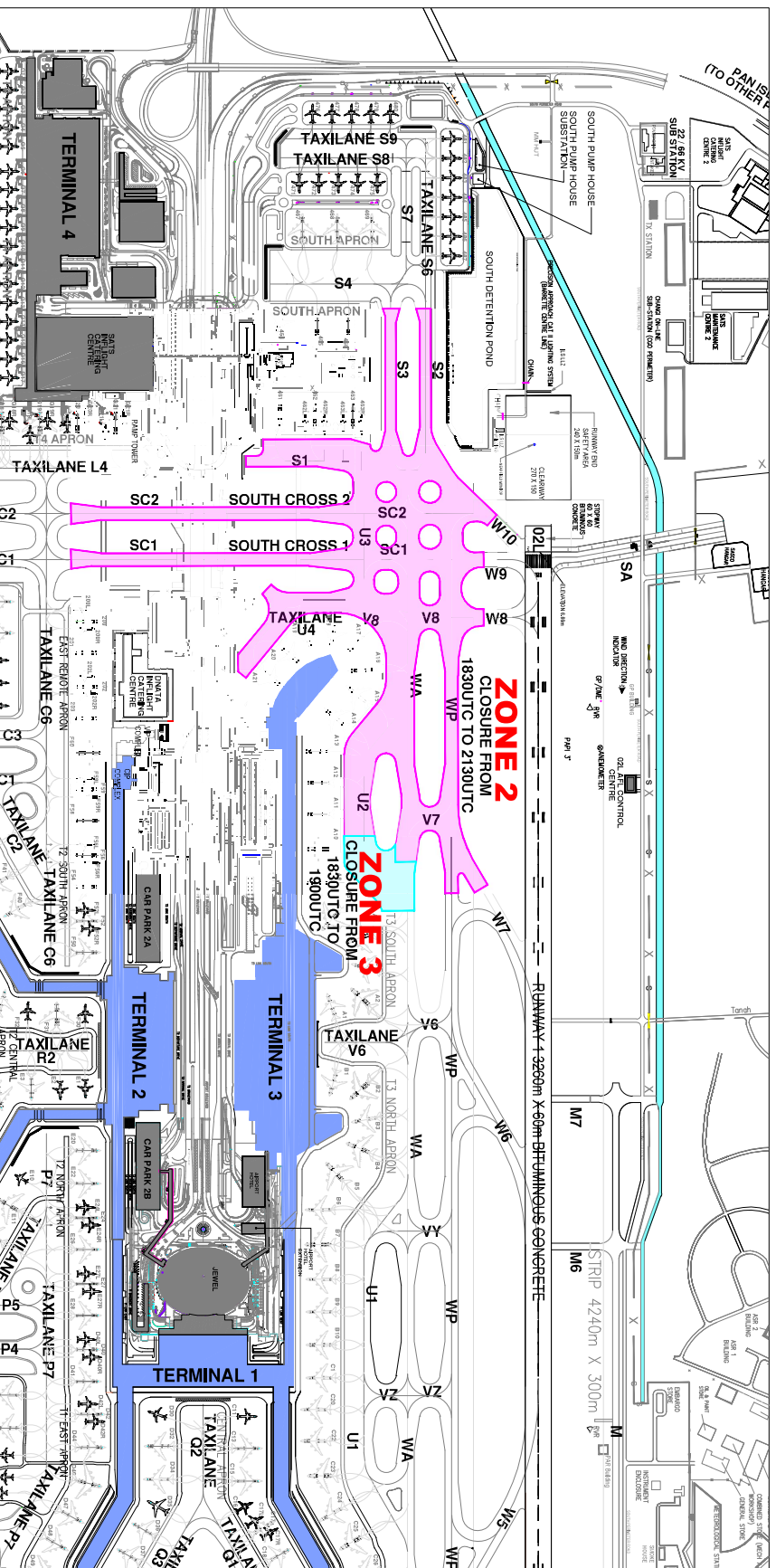


LEGEND

ZONE	COLOUR CODE	CLOSURE TIME
ZONE 1	[Yellow Box]	1630UTC TO 1900UTC

PAGE INTENTIONALLY LEFT BLANK

TAXIWAYS AND TAXILANES CLOSURE - WORK ZONE 2 AND 3



PAGE INTENTIONALLY LEFT BLANK

RUNWAY 02L/20R EMERGENCY RE-OPENING ROUTE

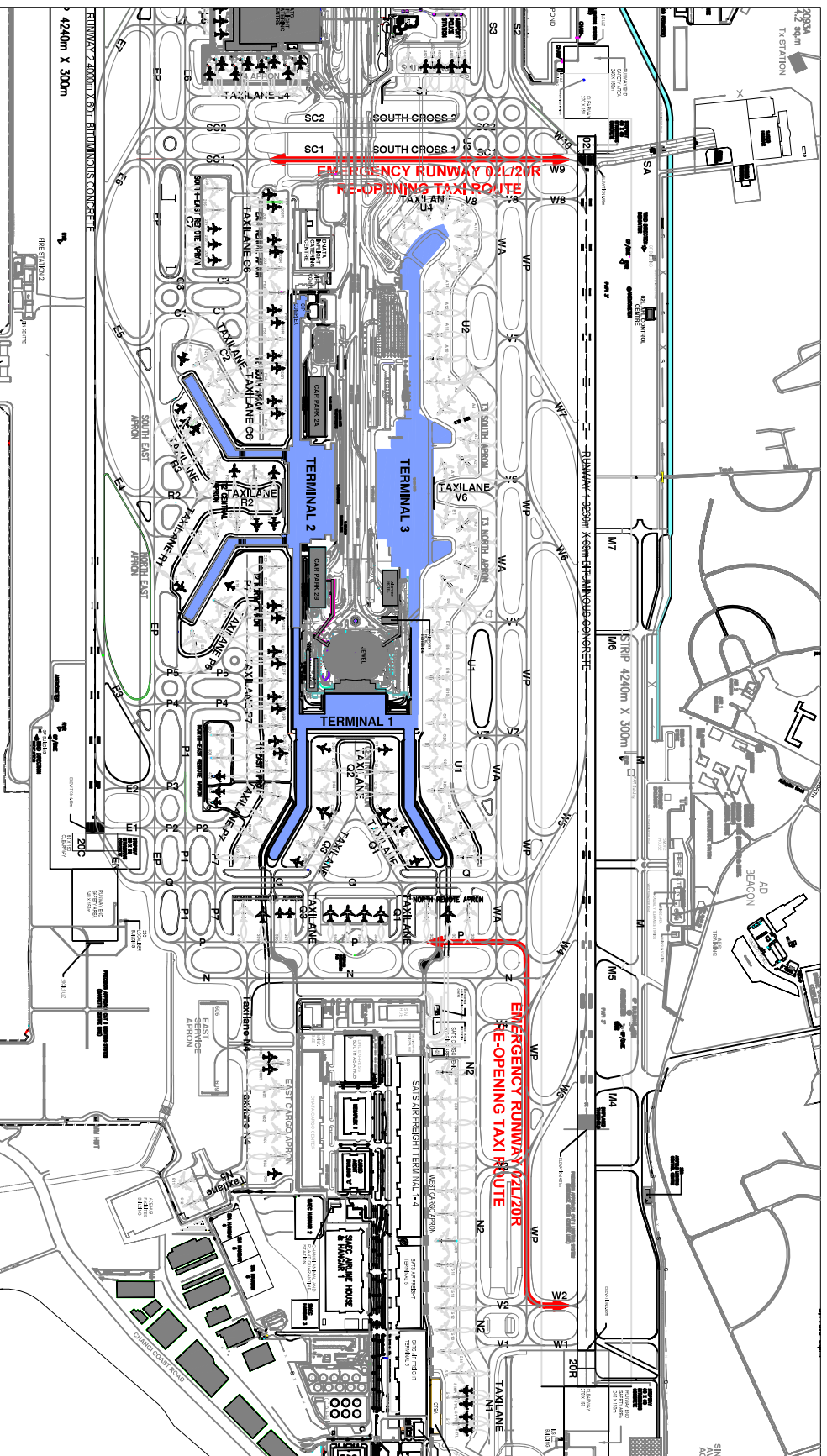


CHART 4

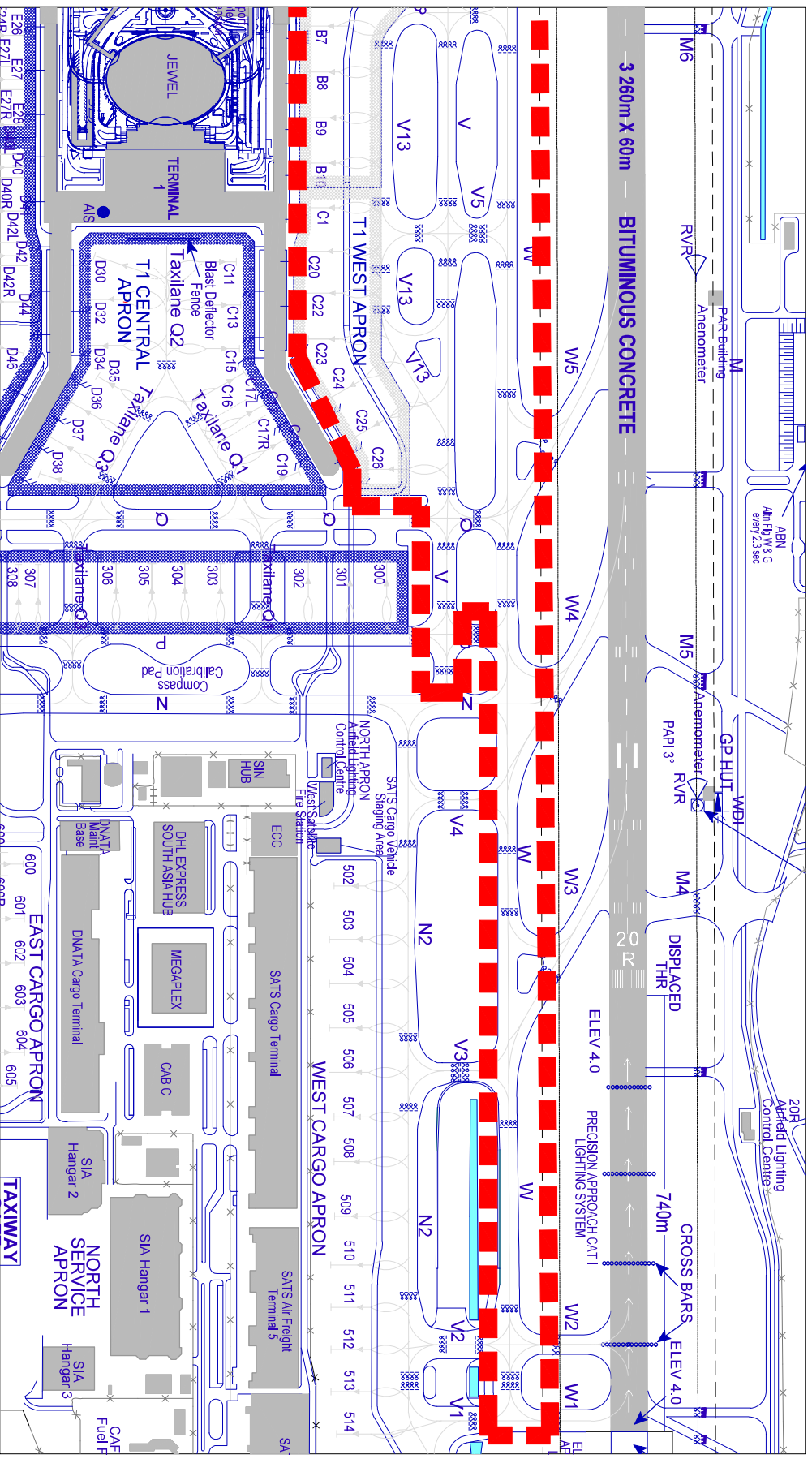
PAGE INTENTIONALLY LEFT BLANK

PAGE INTENTIONALLY LEFT BLANK

UPDATED TAXIWAY AND TAXILANE DESIGNATIONS (ENLARGED -PART 1)

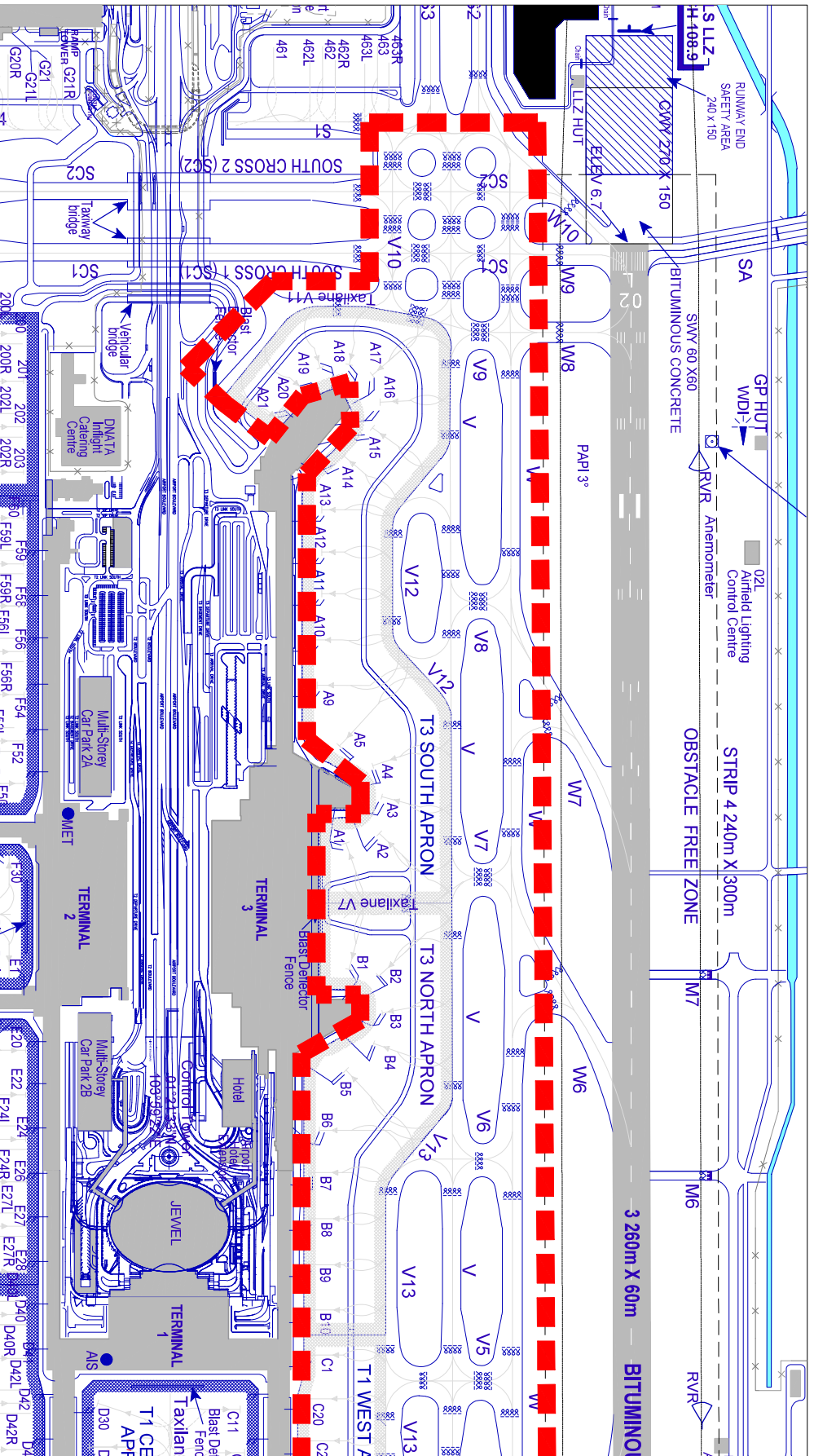
EFFECTIVE FROM 1845UTC ON 13 AUGUST 2020

CHART 6



PAGE INTENTIONALLY LEFT BLANK

UPDATED TAXIWAY AND TAXILANE DESIGNATIONS (ENLARGED -PART 2) EFFECTIVE FROM 1845UTC ON 13 AUGUST 2020



PAGE INTENTIONALLY LEFT BLANK